

Bryant Elementary School

1050 York Street, San Francisco CA 94110, Phone (415) 695-5780

Ms. Dahyana L. Otero, Principal

1994-1995 School Accountability Report Card

San Francisco Unified School District

Fall, 1994

District Mission and Goals

The mission of the San Francisco Unified School District is to provide each student with an equal opportunity to succeed by promoting intellectual growth, creativity, self discipline, cultural and linguistic sensitivity, democratic responsibility, economic competence and physical and mental health so that each student can achieve to his or her maximum ability. In order to achieve this mission, the Board of Education has adopted the following goals: 1) To improve teaching and learning to enhance the academic achievement of all students. 2) To improve staff, parent and community participation in the educational process. 3) To maintain school environments that are safe, secure and attractive. 4) To build a school environment that is fully integrated in all its programs and activities and provides equal opportunity for all students. 5) To improve and expand the Early Childhood Education Program and integrate it into the K-12 Program. 6) To increase and expand inter-agency collaboration to better serve our students. Each school has a set of objectives to achieve these goals. In subsequent pages, these objectives will be listed. If the objective is shown with a check (✓), the objective has been achieved. N/A indicates that the objective is not applicable to the school. No mark at all indicates that the objective has not been achieved. In order to achieve these objectives, the Board has adopted a set of philosophical tenets. For a copy of these tenets see the 1989-90 School Accountability Report Card or the Student Handbook.

School Description

Bryant Year-Round School is located in the heart of San Francisco's Mission District. Our curriculum emphasizes technology and the fine arts. Bryant School's computer program includes a thirty station lab with an additional five-computer workstation in each classroom. The curriculum is outcome based with a strong Whole Language component. Bryant School has formed many partnerships with the business community and the University of San Francisco thus enriching the learning environment of the school. The dedicated Principal, faculty and parent community have made Bryant Year Round School one of the most outstanding schools in the State of California.

The Bryant school staff believes that all children come to school already learning, and that it is our responsibility to recognize their natural abilities, build on them, and provide exciting, innovative, and developmentally appropriate curriculum which fosters their sense of self-confidence and success.

Teacher/Staff Training, and Curriculum Improvement Programs

Professional development is a part of every school site plan and is a major component of the instructional support departments. The district's professional development program provides training opportunities to enable new and experienced teachers to implement the district's core curriculum for all students, to update subject area expertise, and to acquire new instructional strategies. Staff training and instructional improvement has taken place through a variety of ways. A number of on site staff development activities are provided at Bryant. The 1993-94 school year includes workshops by the Bay Area Writing Project and Abacus instructional systems. The Abacus workshop provides a flexible computer based system for identifying learning outcomes by subject area. School resource materials and mastery information is also monitored by this system. The self-directed Bryant staff is open and collaborative. They actively pursue staff development workshops that enrich them professionally. They share information gained through their professional development formally in weekly meetings, and informally as teachers working together to plan the curriculum.

Grade Span:	K-5	Student Enrollment:	310	LEP/NEP*:	39.7%
Building (sq.ft.):	31,500	Average Daily Attendance:	95.5%	Special Education:	7.7%
Yr of Construction:	1980	Optional Enrollment Requests:	40.0%	EDY**:	39.4%
Children Center: Yes <input checked="" type="checkbox"/> No <input type="checkbox"/>		Pre-K: Yes <input type="checkbox"/> No <input checked="" type="checkbox"/>		GATE:	1.9%

456-1/1/95 by Planning, Research, and Information Systems

*LEP/NEP: Limited English Proficient or Non English Proficient
**EDY: Educationally Disadvantaged Youth

Counseling and Student Support Services

District general funds are not available for counseling services at the elementary school level. However, some schools have added support staff funded through special programs, projects, or grant awards. Bryant School has a Computer Coordinator, Speech Therapist, Nurse, Jump Start Coordinator, Student Advisor, Mission Education Project Tutor, and native language assistance for our Hispanic and Asian students. Our Resource Specialist works with identified Learning Disabled students within the classroom environment and assesses students to determine if they should be tested for Special Education placement. Student teachers from the University of San Francisco and San Francisco State University are in regular and bilingual classrooms.

Teacher Assignment

Out of 3,115 certificated teachers in the District's schools, none are teaching out of their credentialed areas. Teachers at Bryant are teaching in the areas in which they are credentialed. The Bryant School program includes five bilingual classrooms. All staff is encouraged to incorporate their special interests and talents in their classroom instruction. This has created an atmosphere which encourages teachers to follow their creative interests and to share their ideas with one another.

Student Attendance and Dropout Rate

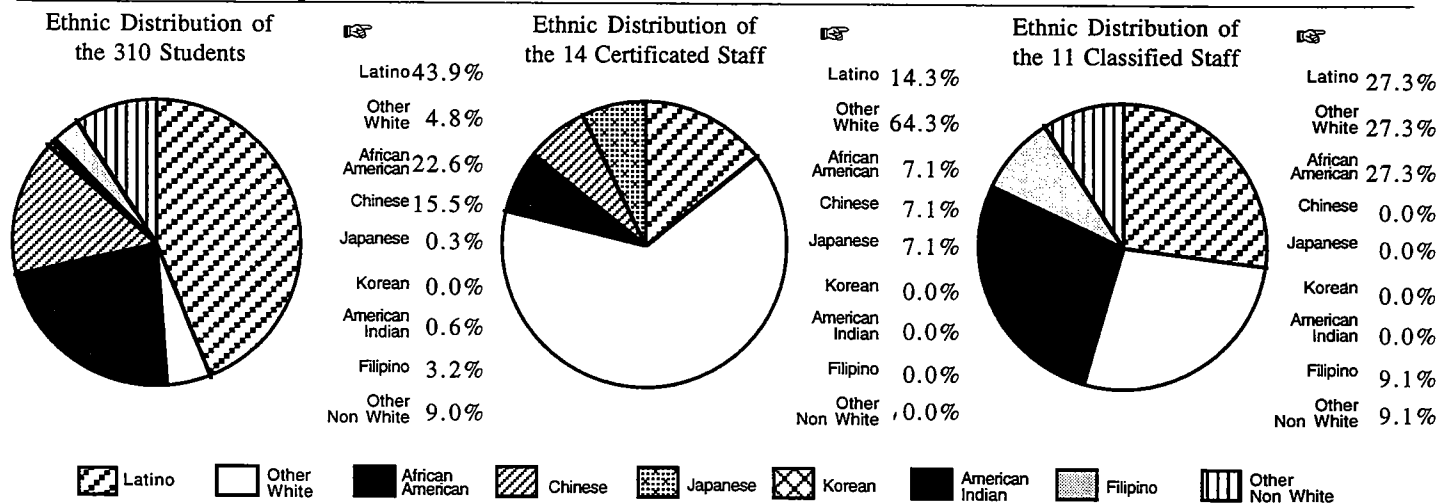
The District's K-5 average attendance for 1993-94 was 98.6% and the dropout rate was 1.7%. At Bryant, attendance for the year was 95.5%, excused absences were 5.1%, unexcused absences were 2.4% and the dropout rate was 0.3%. An important District objective is to reduce dropout rates. Dropouts are defined as students who are absent without reason for 45 days or more. Bryant School has maintained its high attendance rate through close contact (i.e. phone or written communication) with parents, facilitated by the teachers, school Secretary and Student Advisor. Parents are asked to call the school when their child is absent and teachers, secretary and principal follow up on every call. The Bryant School curriculum is student-centered and exciting. The strong focus on technology and developmentally appropriate activities has created a curriculum that students enjoy.

Objective 1o: 1993-94 dropout rate will be reduced from its 1992-93 level.

Class Size

Grade Level	Contract Ratios	Contract Goals	District Averages	School Averages
K	31.2	28	29.0	29.5
1	26.0	24	27.4	29.0
2	26.0	24	27.2	30.0
3	29.8	25	27.4	28.5
4	32.2	30	26.6	14.0
5	32.2	30	28.4	32.5

Ethnic Diversity



Objective 4a: Each school will have no more than 45 percent of its students from any one racial/ethnic group, and at least four racial/ethnic groups will be represented.

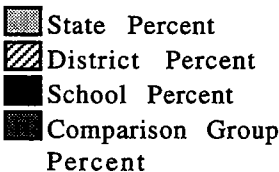

Teacher Evaluation

Administrators, probationary teachers, and all classified personnel are evaluated by their supervisors every year. Tenured teachers are evaluated every two years.

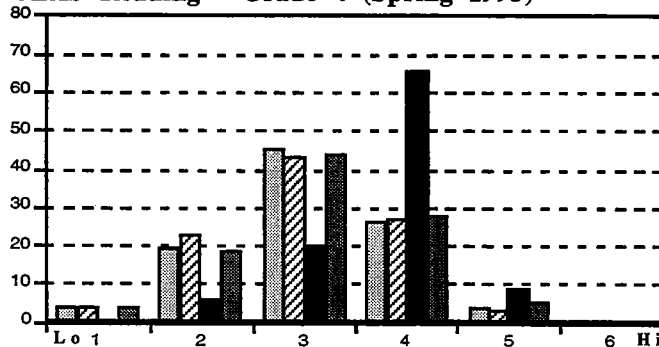
The evaluation processes are determined through contractual agreements with the United Administrators of San Francisco, the United Educators of San Francisco, and the Civil Service Commission of the City and County of San Francisco.

Student Achievement

The California Learning Assessment System (CLAS) is a state mandated annual test. It is currently being administered each Spring at Grades 4,5,8, and 10. Portions of the Comprehensive Tests of Basic Skills (CTBS) are also used by this District to measure individual student progress and proficiency standards.

CLAS:  CTBS: 

CLAS Reading - Grade 4 (Spring 1993)



LEP/NEP = 39.7%

Special Education = 7.7%

Quality of School Instruction and Leadership

High academic and behavioral expectations combined with the philosophy that all students can learn sets a positive tone at Bryant. The Bryant curriculum incorporates technology and the fine arts in thematic school based and interclass projects. Students at Bryant are excited and proud of their school and of their class projects. The Principal and faculty council work closely to ensure that the curriculum is up-to-date while providing equal learning opportunities for all students. Our services include a School Site Team, PTA, Grant Writing Committees, GATE, ESL/Bilingual, "Jump Start," computer labs, and counseling for "at-risk" students.

Substitute Teachers

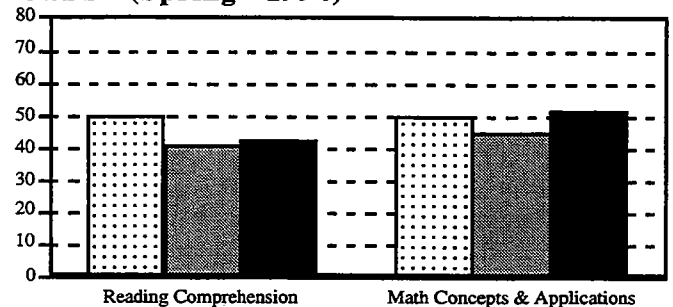
During the 1993-94 school year, the Bryant teacher attendance rate was 97%. Comprehensive lesson plans are an integral part of the Bryant curriculum. Substitute teachers are always provided with lesson plans and support materials.

Student Behavior

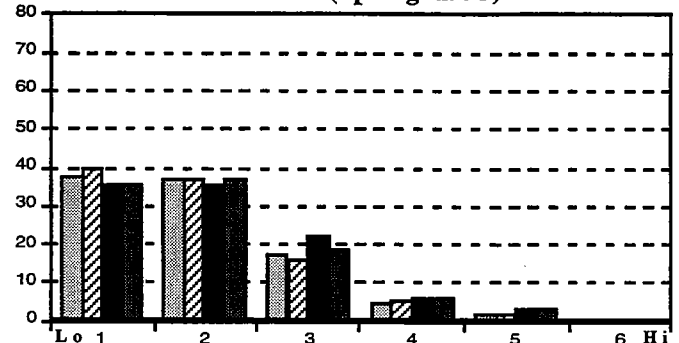
In order to provide a healthy climate, we have regulations consistent with the Student Behavior Handbook. Last year, at Bryant, 2 students were suspended for violations of those regulations. The following program(s) have been included in the School Site Plan to achieve the District's objective to reduce the number of suspensions: Students and staff at Bryant have worked together to identify positive behaviors which have helped to create a safe and orderly school community. Our student recognition program emphasizes and rewards appropriate behaviors.

Objective 3a: Schools will provide interventions which result in the reduction of the number of suspensions and expulsions.

CTBS (Spring 1994)



CLAS Math - Grade 4 (Spring 1993)



EDY = 39.4%

GATE & High Potential = 1.9%

Expenditures and Services Offered

1992-93 SALARY COMPARISON

	* STATE	SFUSD
Beginning Teacher Salary	25,963	26,136
Mid-range Teacher Salary	40,787	38,378
Highest Teacher Salary	50,783	47,162
Principal's Average Salary	65,360	**59,033
Superintendent's Salary	108,046	120,000
Expenditure per Student	-	3,220
% of Budget for Teacher Salaries	43.9%	44.9%
% of Budget for Administrators	5.0%	3.7%

* Districts over 20,000 ADA

** Elementary Schools Only

Textbooks and Instructional Materials

The review, selection, and purchase of textbooks and instructional materials are carried out in conjunction with the California eight-year curriculum improvement cycle. Each year, textbooks and instructional materials are reviewed and adopted in one or two specific subject areas. In 1993-94, there was a district-wide adoption of K-8 science instructional materials which have been implemented over a two-year period. During the 1995-96 school year, there will be the adoption and beginning implementation of a new K-8 mathematics instructional program. Materials available at Bryant include required and supplemental textbooks in English and Spanish, Math Their Way manipulatives, math and language arts software, and "Windows on Science." A variety of reliable and fine arts materials also support the instructional process. Instructional materials used at Bryant are rich and varied. All are in good condition. Our computer lab provides additional instruction for GATE and Chapter 1 students. Grants awarded include EISS, Puppetry and Literature, and S.F. Ed. Fund projects and a technology grant.

School Facilities and Safety

Current Conditions:

A PTA funded mural now upgrades Bryant's external appearance and an unused planter in the yard has been covered over with cement.

Planned Improvements:

The interior of the school is relatively new and minor repairs are made as needed.

Needed Improvements:

The blacktop on the yard needs to be resurfaced and the exterior of the building needs to be repainted. Benches should be refinished. The air conditioning system needs to be repaired.

Objective 3b: The appearance of the school site will be improved



Parent Involvement

Efforts are made to increase parent and community involvement through an active PTA and School Site Team. Parent support is elicited by the staff for both classroom and schoolwide special projects. Although many parents work during the school day, Bryant still maintains a high level of parent participation. Evening performances and open house activities encourage and support working parents to be involved in the school community.

Objective 2a: Together with parent leaders from established site committees and organizations, schools will develop plans to increase parent participation.



If you need any further information about our school or if you wish to ask anything about this document, please feel free to call us.

Si Ud. necesita información en español acerca de este documento, llame a la escuela para obtener las fechas en las cuales habrán reuniones en español.

Pakisuyong tumawag sa paaralan para sa mga petsa ng mga pulong tungkol sa pagpapaliwanag ng mga dokumentong ito sa Pilipino.

Xin gọi điện thoại cho nhà trường để biết ngày hướng dẫn và các nghĩa vụ tài liệu này bằng tiếng Việt.

請打電話向學校詢問有關訓練程序日期之中文說明文件。

San Francisco Unified School District

135 Van Ness Avenue
San Francisco, CA 94102

Attn: Bryant Elementary School

