

# Buena Vista Alternative Elementary School

2641 25th Street, San Francisco CA 94110, Phone (415) 695-5875

Ms. Adelina Aramburo, Principal

## 1994-1995 School Accountability Report Card

San Francisco Unified School District

Fall, 1994

### District Mission and Goals

The mission of the San Francisco Unified School District is to provide each student with an equal opportunity to succeed by promoting intellectual growth, creativity, self discipline, cultural and linguistic sensitivity, democratic responsibility, economic competence and physical and mental health so that each student can achieve to his or her maximum ability.

In order to achieve this mission, the Board of Education has adopted the following goals: 1) To improve teaching and learning to enhance the academic achievement of all students. 2) To improve staff, parent and community participation in the educational process. 3) To maintain school environments that are safe, secure and attractive. 4) To build a school environment that is fully integrated in all its programs and activities and provides equal opportunity for all students. 5) To improve and expand the Early Childhood Education Program and integrate it into the K-12 Program. 6) To increase and expand inter-agency collaboration to better serve our students. Each school has a set of objectives to achieve these goals. In subsequent pages, these objectives will be listed. If the objective is shown with a check (✓), the objective has been achieved. N/A indicates that the objective is not applicable to the school. No mark at all indicates that the objective has not been achieved. In order to achieve these objectives, the Board has adopted a set of philosophical tenets. For a copy of these tenets see the 1989-90 School Accountability Report Card or the Student Handbook.

### School Description

Buena Vista Alternative School's Spanish Bilingual Immersion program offers both the native English speaker and the native Spanish speaker an opportunity to become bilingual and biliterate while developing an appreciation for cultural diversity. By graduation, students achieve communicative fluency and functional literacy in English and Spanish.

Our diverse students are helped to meet the challenge of bilingual immersion education through experiences that enhance self-esteem, cooperation, and creative solutions to conflict. Parents are an integral part of the school community. Staff members are knowledgeable professionals and are either English or Spanish language models.

The curriculum is presented in integrated thematic units which ensure the acquisition of essential information and skills, encourage natural curiosity, critical awareness, multicultural awareness and the delight of discovery, in short the life-long love of learning. Activities are experiential, multi-sensory and address multiple learning modalities, encouraging an engaging, satisfying and meaning-based curriculum. Teachers and students have daily opportunities to use technology in purposeful ways. Second language acquisition occurs in a natural and effective manner.

Buena Vista is a place where everyone feels challenged, responsible, appreciated and free to do his or her best.

### Teacher/Staff Training, and Curriculum Improvement Programs

Professional development is a part of every school site plan and is a major component of the instructional support departments. The district's professional development program provides training opportunities to enable new and experienced teachers to implement the district's core curriculum for all students, to update subject area expertise, and to acquire new instructional strategies. Staff development opportunities will be varied this year. Many of our staff members, including the principal, are committed to the continuation and implementation of a two year on-going training with Optimal Learning Environment (OLE) for special education reform and inclusion. In addition to the District developed science days, Buena Vista is committed to Project 2061, a challenge-based science curriculum. The Buena Vista staff and community will spend additional staff development days devoted to reviewing our bilingual immersion language structure program (by visiting existing immersion education programs), developing a shared governance model, receiving training in the different learning styles, and evaluating our program at the end of the year.

Grade Span:	K-5	Student Enrollment:	344	LEP/NEP*:	19.8%
Building (sq.ft.):	32,490	Average Daily Attendance:	100.0%	Special Education:	7.6%
Yr of Construction:	1969	Optional Enrollment Requests:	84.0%	EDY**:	41.0%
Children Center: Yes <input type="checkbox"/> No <input checked="" type="checkbox"/>		Pre-K: Yes <input checked="" type="checkbox"/> No <input type="checkbox"/>		GATE:	13.1%

461-1/1/95 by Planning, Research, and Information Systems

\*LEP/NEP: Limited English Proficient or Non English Proficient  
\*\*EDY: Educationally Disadvantaged Youth

## Counseling and Student Support Services

District general funds are not available for counseling services at the elementary school level. However, some schools have added support staff funded through special programs, projects, or grant awards. Buena Vista has a student advisor, a library paraprofessional, an itinerant speech therapist and a resource specialist teacher. With the support of the P.T.A. and grants, we have one dance artist and a photography program. Parent volunteers are evidenced in all aspects of the school. Other assistance programs include Student Services, San Francisco Volunteers, a before school peer/parent tutoring, a library service program and on site before and after school childcare.

## Student Attendance and Dropout Rate

The District's K-5 average attendance for 1993-94 was 98.6% and the dropout rate was 1.7%. At Buena Vista, attendance for the year was 100.0%, excused absences were 5.1%, unexcused absences were 0.4% and the dropout rate was 2.9%. An important District objective is to reduce dropout rates. Dropouts are defined as students who are absent without reason for 45 days or more. The student advisor, secretary and/or principal monitor absences and tardies daily. The commitment and collaboration of staff and parents keeps attendance close to 100%.

## Teacher Assignment

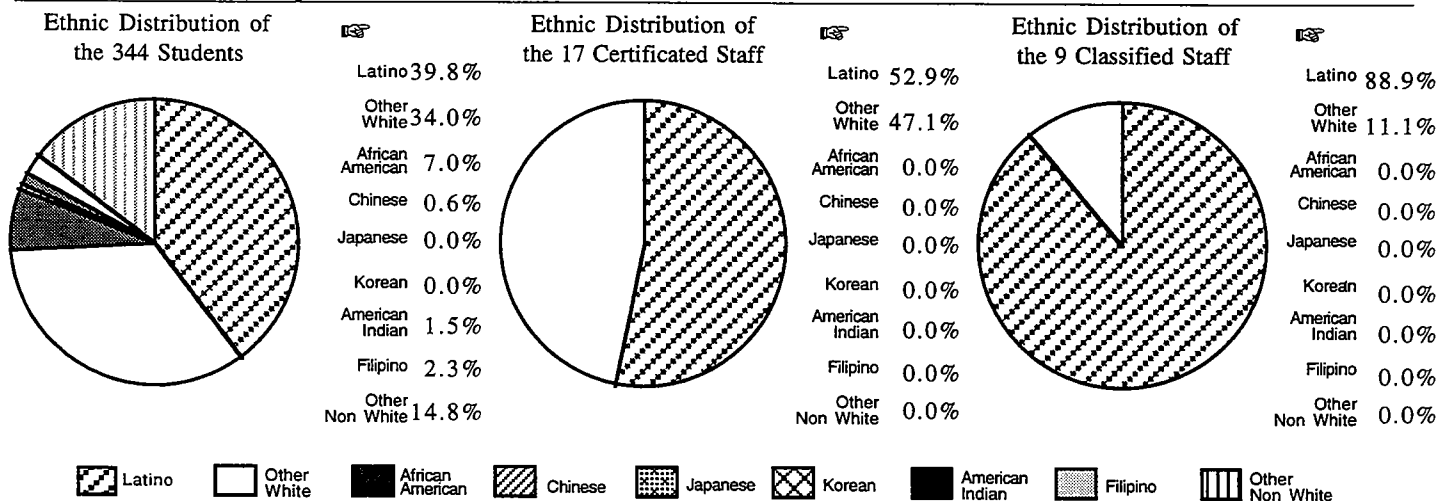
Out of 3,115 certificated teachers in the District's schools, none are teaching out of their credentialed areas. At Buena Vista, nine bilingual teachers meet the credential needs of the Spanish Bilingual Immersion program. Three of the teachers are working toward their credentials. We have one fully credentialed Spanish bilingual special education teacher and one special education teacher working toward her credential. In addition, we have a full time resource teacher, a half time resource teacher, a full time Resource Specialist Program teacher and pre-K teacher on staff.

Objective 1o: 1993-94 dropout rate will be reduced from its 1992-93 level.

## Class Size

Grade Level	Contract Ratios	Contract Goals	District Averages	School Averages
K	31.2	28	29.0	31.5
1	26.0	24	27.4	28.5
2	26.0	24	27.2	27.0
3	29.8	25	27.4	24.5
4	32.2	30	26.6	17.5
5	32.2	30	28.4	22.7

## Ethnic Diversity



Objective 4a: Each school will have no more than 45 percent of its students from any one racial/ethnic group, and at least four racial/ethnic groups will be represented.

## Teacher Evaluation

Administrators, probationary teachers, and all classified personnel are evaluated by their supervisors every year. Tenured teachers are evaluated every two years.

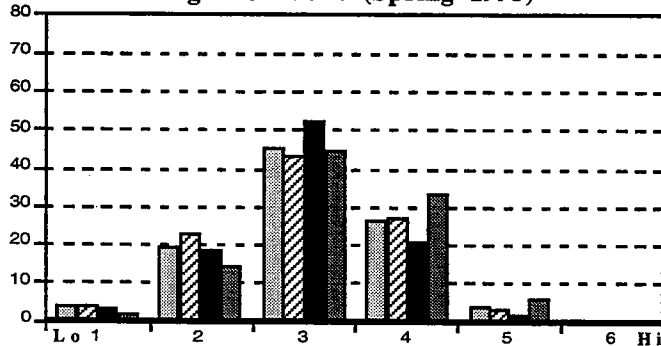
The evaluation processes are determined through contractual agreements with the United Administrators of San Francisco, the United Educators of San Francisco, and the Civil Service Commission of the City and County of San Francisco.

## Student Achievement

The California Learning Assessment System (CLAS) is a state mandated annual test. It is currently being administered each Spring at Grades 4, 5, 8, and 10. Portions of the Comprehensive Tests of Basic Skills (CTBS) are also used by this District to measure individual student progress and proficiency standards.

CLAS: CTBS:

CLAS Reading - Grade 4 (Spring 1993)

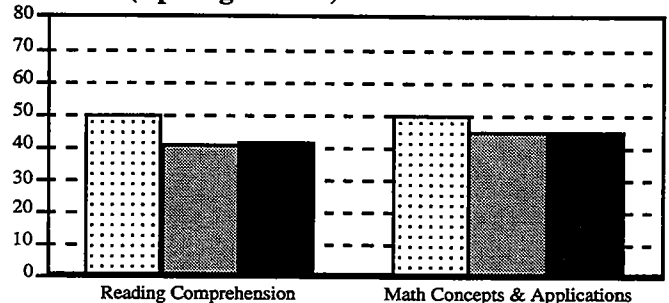


## Student Behavior

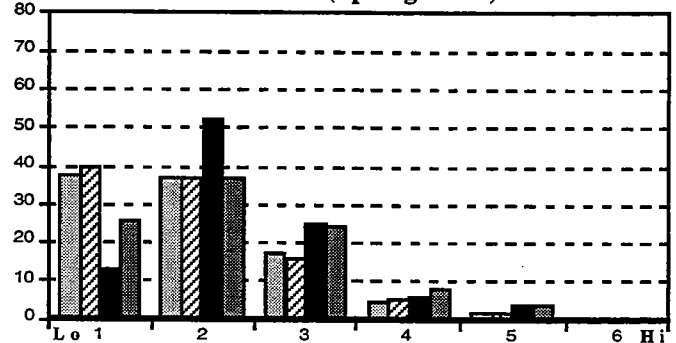
In order to provide a healthy climate, we have regulations consistent with the Student Behavior Handbook. Last year, at Buena Vista, 6 students were suspended for violations of those regulations. The following program(s) have been included in the School Site Plan to achieve the District's objective to reduce the number of suspensions: Student Services, student advisor, cross age game program, Student Study Team, student of the week in the classrooms, the before school peer/parent tutoring program and on-going parent contacts.

Objective 3a: Schools will provide interventions which result in the reduction of the number of suspensions and expulsions.

CTBS (Spring 1994)



CLAS Math - Grade 4 (Spring 1993)



LEP/NEP = 19.8%      Special Education = 7.6%

EDY = 41.0%      GATE & High Potential = 13.1%

## Quality of School Instruction and Leadership

The Buena Vista school community is dedicated to a learning environment that encourages academic excellence and personal growth for all students in an atmosphere of concern and mutual respect. A committed staff provides continuous encouragement, guidance, recognition and positive reinforcement for all students. There is a school-wide homework and discipline policy. Shared decision making, team teaching and mentoring keep morale high. Parents are actively engaged in the School Site Council, P.T.A. and volunteer committees. Staff and parents work together to provide a caring and enriching educational program that promotes life-long learning and social responsibility.

## Substitute Teachers

During the 1993-94 school year, the Buena Vista teacher attendance rate was not available. When substitute teachers are not provided by the district, the principal and resource staff cover for absent teachers.

## Expenditures and Services Offered

1992-93 SALARY COMPARISON

	* STATE	· SFUSD
Beginning Teacher Salary	25,963	26,136
Mid-range Teacher Salary	40,787	38,378
Highest Teacher Salary	50,783	47,162
Principal's Average Salary	65,360	**59,033
Superintendent's Salary	108,046	120,000
Expenditure per Student	-	3,220
% of Budget for Teacher Salaries	43.9%	44.9%
% of Budget for Administrators	5.0%	3.7%

\* Districts over 20,000 ADA

\*\* Elementary Schools Only

## **Textbooks and Instructional Materials**

The review, selection, and purchase of textbooks and instructional materials are carried out in conjunction with the California eight-year curriculum improvement cycle. Each year, textbooks and instructional materials are reviewed and adopted in one or two specific subject areas. In 1993-94, there was a district-wide adoption of K-8 science instructional materials which have been implemented over a two-year period. During the 1995-96 school year, there will be the adoption and beginning implementation of a new K-8 mathematics instructional program. Buena Vista selects materials to meet the unique needs of our students in the Spanish Bilingual Immersion program. Supplementary materials are used with our GATE funds and other special education funds to extend the curriculum. Parent groups have purchased: multiple copies of Spanish literature, P.E. equipment, software, assembly programs, instructional materials and field trips. In addition, parents have donated computer hardware to the school.

## **School Facilities and Safety**

### **Current Conditions:**

Parents have built shelves for the classrooms and made other general building repairs at the annual work day.

### **Planned Improvements:**

The Buildings and Grounds Committee will assist in general upkeep of the building. Proposition A funds will be used to paint the exterior as well as the interior of the building. The window sashes will also be replaced.

### **Needed Improvements:**

The building exterior and hallways need to be painted. The yard needs new benches. The playground should be re-surfaced and relined.

*Objective 3b: The appearance of the school site will be improved*



## **Parent Involvement**

Parent participation is vital to the success of our program. Staff and parents work together to enrich the learning environment. The P.T.A. engages in active fund raising, educational, socials, work-days and supporting school-wide projects. Parents volunteer in the classroom. Room Parents enhance grade level programs and activate phone trees. The School Site Council makes decisions affecting the school plan and state funding. The Bilingual Advisory Committee and the School Advisory Committee will also have input into the school plan. Parents are always welcome and are highly valued resources.

*Objective 2a: Together with parent leaders from established site committees and organizations, schools will develop plans to increase parent participation.*



*If you need any further information about our school or if you wish to ask anything about this document, please feel free to call us.*

*Si Ud. necesita información en español acerca de este documento, llame a la escuela para obtener las fechas en las cuales habrán reuniones en español.*

*Pakisuyong tumawag sa paaralan para sa mga petsa ng mga pulong tungkol sa pagpapaliwanag ng mga dokumentong ito sa Pilipino.*

*Xin gọi diên thoai cho nhà trường để biết ngày hướng dân và các nghĩa vụ tài liệu này bằng tiếng Việt.*

*請打電話向學校詢問有關訓練程序日期之中文說明文件。*

**San Francisco Unified School District**

135 Van Ness Avenue

San Francisco, CA 94102

Attn: Buena Vista Alternative Elementary School