

# George Washington Carver Elementary

1360 Oakdale Avenue, San Francisco CA 94124, Phone (415) 330-1540

Ms. Louise C. Jones, Principal

## 1994-1995 School Accountability Report Card

San Francisco Unified School District

Fall, 1994

### District Mission and Goals

The mission of the San Francisco Unified School District is to provide each student with an equal opportunity to succeed by promoting intellectual growth, creativity, self discipline, cultural and linguistic sensitivity, democratic responsibility, economic competence and physical and mental health so that each student can achieve to his or her maximum ability.

In order to achieve this mission, the Board of Education has adopted the following goals: 1) To improve teaching and learning to enhance the academic achievement of all students. 2) To improve staff, parent and community participation in the educational process. 3) To maintain school environments that are safe, secure and attractive. 4) To build a school environment that is fully integrated in all its programs and activities and provides equal opportunity for all students. 5) To improve and expand the Early Childhood Education Program and integrate it into the K-12 Program. 6) To increase and expand inter-agency collaboration to better serve our students. Each school has a set of objectives to achieve these goals. In subsequent pages, these objectives will be listed. If the objective is shown with a check (✓), the objective has been achieved. N/A indicates that the objective is not applicable to the school. No mark at all indicates that the objective has not been achieved. In order to achieve these objectives, the Board has adopted a set of philosophical tenets. For a copy of these tenets see the 1989-90 School Accountability Report Card or the Student Handbook.

### Teacher/Staff Training, and Curriculum Improvement Programs

Professional development is a part of every school site plan and is a major component of the instructional support departments. The district's professional development program provides training opportunities to enable new and experienced teachers to implement the district's core curriculum for all students, to update subject area expertise, and to acquire new instructional strategies. Staff development activities at Carver are planned, implemented and evaluated on an ongoing basis for the purpose of enabling staff to effectively deliver curriculum and instruction which is rigorous, challenging and responsive to students' needs. Some of the programs in which teachers have participated are: BAWP, TESA, Cooperative Learning, Effective Teaching Strategies and Tribes.

### School Description

Dr. George Washington Carver Academic Elementary School has a culturally diverse student population coming from many different areas of the city. We provide a comprehensive curriculum in a structured environment that stresses academic excellence for all students. We accept only our students' best efforts. Our school makes available to students a variety of enrichment opportunities, including: performing arts, Chess Club, music, computer, Science Club, tutoring, and Afterschool Science/Math Academy. The computer lab is used to develop problem solving, critical thinking and writing skills in addition to computer-assisted instruction. Our Career Awareness Program is one that involves the Bay Area community in preparing students for the world of work. School is our business and we are about the business of working together collaboratively to educate our students.

Carver has won the following awards:

School: California Distinguished School Award, 1989, 1993

Students: 1st. Place Winners in Poster Contest

Students: 1st, 2nd, 3rd Place Essays & Oratorical

Redbook National Outstanding School Award

Teachers: Teacher of the Year, 1991; Teacher of the Year, 1990

Outstanding Paraprofessional Awards

Principal: Milken Family National Educator Award

General: Letters of Commendation from Governor, Mayor,

Senators, Congressional Representatives.

Grade Span:	K-5	Student Enrollment:	353	LEP/NEP*:	15.0%
Building (sq.ft.):	45,500	Average Daily Attendance:	96.9%	Special Education:	4.0%
Yr of Construction:	1973	Optional Enrollment Requests:	32.6%	EDY**:	37.7%
Children Center: Yes <input type="checkbox"/> No <input checked="" type="checkbox"/>		Pre-K: Yes <input type="checkbox"/> No <input checked="" type="checkbox"/>		GATE:	7.4%

625-1/1/95 by Planning, Research, and Information Systems

\*LEP/NEP: Limited English Proficient or Non English Proficient  
\*\*EDY: Educationally Disadvantaged Youth

## Counseling and Student Support Services

District general funds are not available for counseling services at the elementary school level. However, some schools have added support staff funded through special programs, projects, or grant awards. Dr. G.W. Carver has a full time student advisor funded through Consent Decree. The Student Advisor provides counseling to students on a daily basis, as well as on-going out-reach services to parents. Other support service include: a nurse, a speech clinician, ESL, 3 Lang. Dev. classes, substance abuse counseling, and a site-based Primary Prevention Program, and Elementary Advisor.

## Student Attendance and Dropout Rate

The District's K-5 average attendance for 1993-94 was 98.6% and the dropout rate was 1.7%. At Carver, attendance for the year was 96.9%, excused absences were 5.6%, unexcused absences were 1.1% and the dropout rate was 2.1%. An important District objective is to reduce dropout rates. Dropouts are defined as students who are absent without reason for 45 days or more. Carver's model combines parent outreach, counseling, and collaboration with community mental health and social services. Early intervention is provided to assist families.

## Teacher Assignment

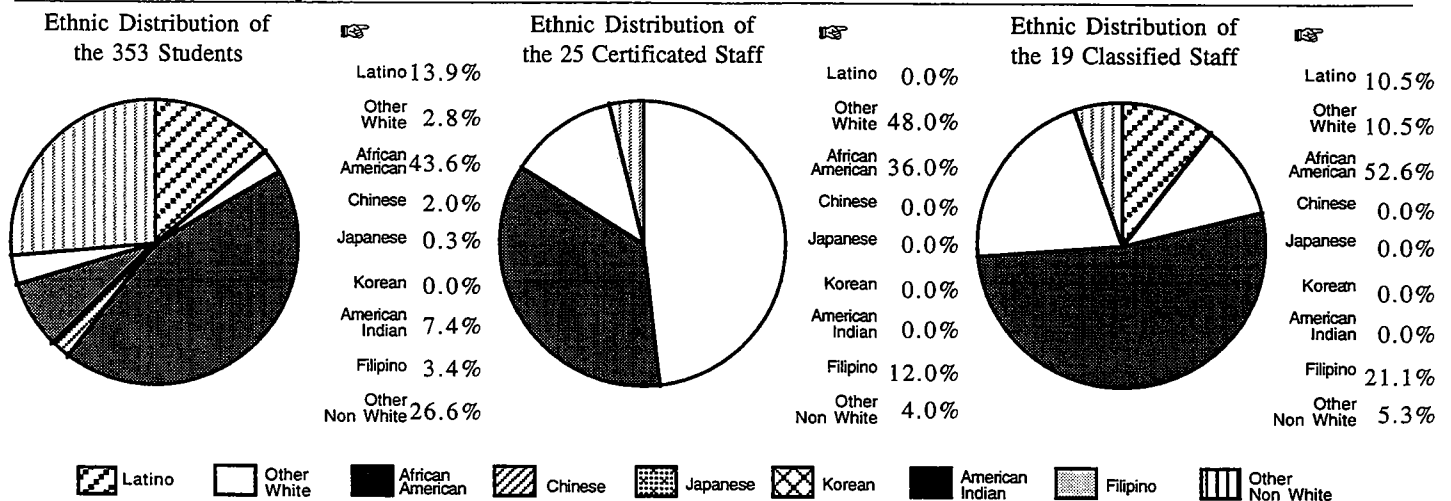
Out of 3,115 certificated teachers in the District's schools, none are teaching out of their credentialed areas.

Objective 1o: 1993-94 dropout rate will be reduced from its 1992-93 level.

## Class Size

Grade Level	Contract Ratios	Contract Goals	District Averages	School Averages
K	31.2	28	29.0	27.5
1	26.0	24	27.4	21.7
2	26.0	24	27.2	22.5
3	29.8	25	27.4	24.7
4	32.2	30	26.6	27.0
5	32.2	30	28.4	23.5

## Ethnic Diversity



Objective 4a: Each school will have no more than 45 percent of its students from any one racial/ethnic group, and at least four racial/ethnic groups will be represented.





## Teacher Evaluation




Administrators, probationary teachers, and all classified personnel are evaluated by their supervisors every year. Tenured teachers are evaluated every two years.

The evaluation processes are determined through contractual agreements with the United Administrators of San Francisco, the United Educators of San Francisco, and the Civil Service Commission of the City and County of San Francisco.

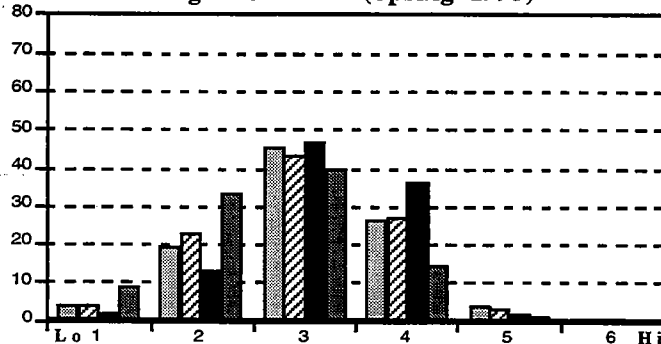
## Student Achievement

The California Learning Assessment System (CLAS) is a state mandated annual test. It is currently being administered each Spring at Grades 4,5,8, and 10. Portions of the Comprehensive Tests of Basic Skills (CTBS) are also used by this District to measure individual student progress and proficiency standards.

CLAS:  State Percent  District Percent  School Percent  Comparison Group Percent

CTBS:  National  District  School

CLAS Reading - Grade 4 (Spring 1993)



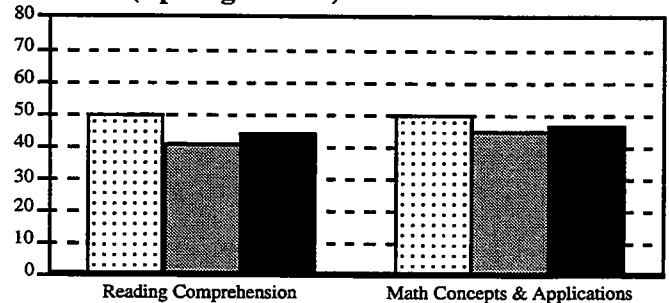
LEP/NEP = 15.0% Special Education = 4.0%

## Student Behavior

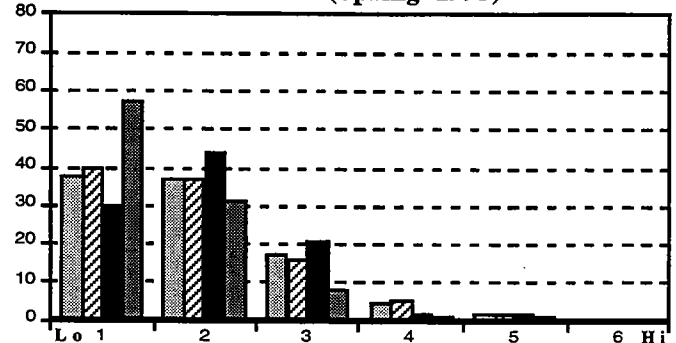
In order to provide a healthy climate, we have regulations consistent with the Student Behavior Handbook. Last year, at Carver, no students were suspended for violations of those regulations. The following program(s) have been included in the School Site Plan to achieve the District's objective to reduce the number of suspensions: Carver follows regulations in the Student Behavior Handbook and articulates behavioral expectations to parents, guardians, and students through on-going communication with the home.

Objective 3a: Schools will provide interventions which result in the reduction of the number of suspensions and expulsions.

CTBS (Spring 1994)



CLAS Math - Grade 4 (Spring 1993)



EDY = 37.7% GATE & High Potential = 7.4%

## Quality of School Instruction and Leadership

At Carver, the planning, implementation and evaluation of the school program reflects a focus on student learning and achievement. Students are challenged with a clear, consistent and rigorous program enabling each individual to reach his/her potential. The principal, staff and parents work as a team to improve and maintain the educational program through clinical supervision, cognitive coaching and conferencing. Carver received the 1989 and 1993 California Distinguished School Award. Some teachers have received the outstanding teacher award. The principal received a National Outstanding Educator Award for 1990-91.

## Substitute Teachers

During the 1993-94 school year, the Carver teacher attendance rate was 76%.

## Expenditures and Services Offered

### 1992-93 SALARY COMPARISON

	* STATE	SFUSD
Beginning Teacher Salary	25,963	26,136
Mid-range Teacher Salary	40,787	38,378
Highest Teacher Salary	50,783	47,162
Principal's Average Salary	65,360	**59,033
Superintendent's Salary	108,046	120,000
Expenditure per Student	-	3,220
% of Budget for Teacher Salaries	43.9%	44.9%
% of Budget for Administrators	5.0%	3.7%

\* Districts over 20,000 ADA

\*\* Elementary Schools Only

## **Textbooks and Instructional Materials**

The review, selection, and purchase of textbooks and instructional materials are carried out in conjunction with the California eight-year curriculum improvement cycle. Each year, textbooks and instructional materials are reviewed and adopted in one or two specific subject areas. In 1993-94, there was a district-wide adoption of K-8 science instructional materials which have been implemented over a two-year period. During the 1995-96 school year, there will be the adoption and beginning implementation of a new K-8 mathematics instructional program. At Dr. George Washington Carver, textbooks are purchased for each student. Additionally, a variety of supplementary instructional materials are selected to meet the unique needs of our diverse student population. Students have access to high quality multicultural literature and science materials in classroom libraries and the school library. Kits are purchased to enhance students' oral language skills.

## **School Facilities and Safety**

### ***Current Conditions:***

The school is in good condition overall. Plants adorn the interior of the building. The district continues to make necessary improvements.

### ***Planned Improvements:***

Fencing around the school still needs to be completed. Yard needs upgrading.

### ***Needed Improvements:***

Heating and ventilation needs to be improved. Playground surface needs improving.

*Objective 3b: The appearance of the school site will be improved*



## **Parent Involvement**

School support groups meet monthly to encourage involvement and give input on educational issues (PAG,SSC,SAC,BAC) and/or financial support as needed for various educational activities (PAG). Business persons volunteer in classes. Letters to the home inform families of student learning. Parents/guardians attend conferences and workshops, like Family Math, Parenting Skills, and Computer. Meetings for limited-English-speaking parents are held with translators. Children and Parents Succeeding program involves parents in the classroom.

*Objective 2a: Together with parent leaders from established site committees and organizations, schools will develop plans to increase parent participation.*



*If you need any further information about our school or if you wish to ask anything about this document, please feel free to call us.*

*Si Ud. necesita información en español acerca de este documento, llame a la escuela para obtener las fechas en las cuales habrán reuniones en español.*

*Pakisuyong tumawag sa paaralan para sa mga petsa ng mga pulong tungkol sa paggapaliwanag ng mga dukumentong ito sa Pilipino.*

*Xin gọi diên thoai cho nhà trường để biết ngày hướng dân và các nghĩa về tài liệu này bằng tiếng Việt.*

*請打電話向學校詢問有關訓練程序日期之中文說明文件。*

**San Francisco Unified School District**

135 Van Ness Avenue

San Francisco, CA 94102

Attn: George Washington Carver Elementary