

# Alvarado Elementary School

# HIGHLIGHTS

625 Douglass Street, San Francisco, CA 94114

415-695-5695

Mr. David Weiner, Principal

## Principal's Introduction

Alvarado is a premier elementary school focused on improving the achievement levels for all of its students. All of our classrooms offer a comprehensive, rigorous, and standards-based instructional program in line with state and district requirements. We believe that all students can learn and that it is the responsibility of parents, teachers, and the school community to help children realize their potential.

## Last Year's Best Achievements

African American Assembly, Woman's History Assembly, Cinco de Mayo Assembly.  
Great improvement of Alvarado students on standardized tests.

## School Snapshot

Current Student Enrollment: 443	Grade span: K-5
02/03 Average Daily Attendance: 95.3%	Accountability Act and Improvement Programs:
Title I/State Pre-K Program: No	
Children's Center/Childcare: No	
Student Uniforms: No	
Building (square feet): 51,700	
Year of Construction: 1926	

## Key Elements of School Safety Plan

- Evacuation for fire, earthquake, emergencies.
- Resource/administrative staff by room numbers.
- Incorporating Peaceful Streets education for 4th and 5th grades.
- Health education, Tribes, Health Fair, Crisis Intervention.
- School police officer to discuss use of 911, crossing streets, safety.

## Key Programs

Integration of Spanish Immersion children and general education children.  
Morning bilingual/multilingual assemblies daily to focus on learning, affirming diversity through equal representation of different cultures and languages including singing and speaking in English and Spanish. We celebrate diversity through various assemblies and performances. We have sand tray counseling, Tribes, and a rich arts program which enables children to extend the core curriculum.

## Focus for Improvement

- Increasing the achievement of our Economically Disadvantaged Youth.
- Providing additional services for our at-risk students.

## Opportunities for Parent Involvement

Contact Person-Name: Susana Rojas and Nancy Hawkins

Phone: 695-5699

Classroom tutoring, library, classroom assistance, fundraising, literacy committee, arts committee, school advisory committees, health fair, PTA committees and offices, yard supervision, games, afterschool tutoring. Talents are matched to needs in the school.

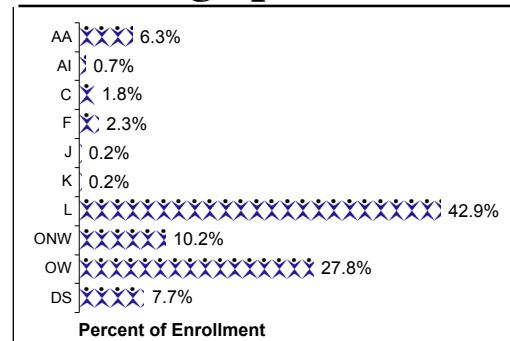
## School Description

Alvarado is a unique school that offers a challenging and enriching academic curriculum. Our classrooms create instructional challenges to meet the needs of each of our students and enable them to achieve their full potential. We offer an outstanding Spanish Immersion Program, Perceptual Motor Program, Computer Lab, Science Lab, and various Visual and Performing Arts. Our after school programs include tutorial, enrichment clubs and supervised play activities. We also have a fee-based after school childcare center. Alvarado views itself as a school family committed to the academic, social, and emotional growth of each student. We draw our students from Noe Valley, Mission, Glen Park, Bernal Heights, and Visitacion Valley neighborhoods. We provide an environment that celebrates our multicultural diversity and are proud of the positive, warm feeling that is present both in our school and with the three communities that we serve.

## School Vision

- The Alvarado School Community knows every child can learn and succeed at high levels.
- We will equip each child with critical thinking and problem-solving skills.
- We will treat each child with dignity and respect.

## Student Demographics (Fall 2003)



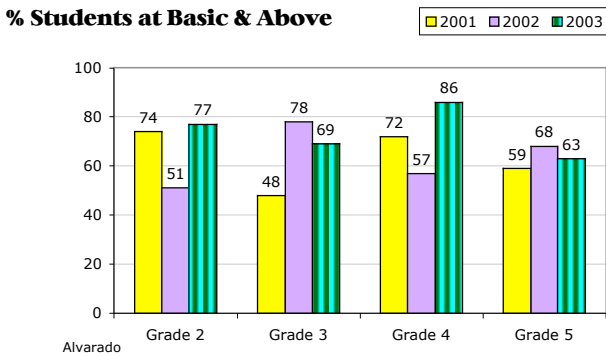
ELL 03 26.6 %

EDY 03: 35.9 %

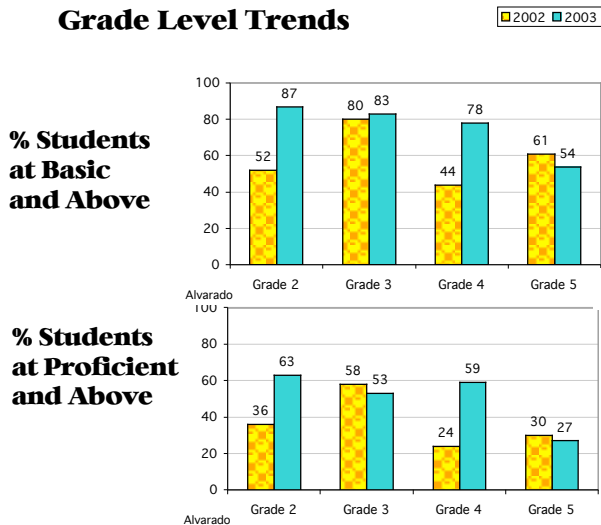
*\*These are selected highlights of the SARC. The complete SARC required by the California Department of Education can be seen at [www.sfusd.edu](http://www.sfusd.edu) under "school information."*

# Alvarado ES STUDENT ACHIEVEMENT

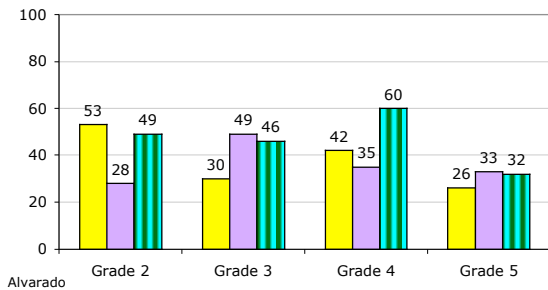
## CST English/Language Arts Grade Level Trends



## CST Math Grade Level Trends



## % Students at Proficient and Above



## Spanish Assessment of Basic Education

Reference percentile	Grade 2		Grade 3		Grade 4		Grade 5	
	2001	02	01	02	01	02	01	02
Reading	75	82	87	90	83	73	77	68
Math	80	74	82	91	70	64	80	74
Language	74	80	86	90	84	76	85	76
Spelling	76	74	87	83	68	71	68	66

\*10 or fewer students

Testing is done in the spring of the year.

## State Assessments

API Data	2000-2001	2001-2002	2002-2003	2003-2004
Base API Score	689	676	689	765
Statewide Rank	6	5	5	7 (Note: # indicates that no growth target was assigned in that year.)
Similar Schools Rank	9	6	3	7
Growth Target	6	6	6	2
Percent Tested in Spring	98 %	98 %	99 %	
Actual Growth	-14	17	81	
Growth API Score	675	693	770	

School met all 2003 Adequate Yearly Progress (AYP) for Phase 1? Yes

## District Assessments

Percent of students at a performance level of 4 or higher

Writing California Writing Standards (Grade 4)		
2001	2002	2003
75.0%	71.9%	86.1%

Percent of students at Basic and above

Mathematics - MPA Math Performance Assessment (Grade 3)		
2001	2002	2003
52.0%	91.0%	88.0%

3 year trend data on performance assessments

## Comparisons Comparison of school to District and State for each grade level

Gr	2003 CST/ELA % students achieving at proficient or advanced level			2003 CST/Math % students achieving at proficient or advanced level			2003 CAT6 Reading % tested students scoring at or above 50th percentile (nat'l average)			2003 CAT6 Math % tested students scoring at or above 50th percentile (nat'l average)		
	School	District	State	School	District	State	School	District	State	School	District	State
2	49.0%	38%	36%	63.0%	54%	53%	62.0%	45%	46%	69.0%	61%	57%
3	46.0%	36%	33%	53.0%	52%	46%	50.0%	32%	34%	74.0%	58%	52%
4	60.0%	43%	39%	59.0%	48%	45%	53.0%	37%	35%	64.0%	54%	48%
5	32.0%	39%	36%	27.0%	37%	35%	38.0%	42%	41%	41.0%	53%	49%