

*Bessie Carmichael Elementary School / Filipino Education Center*

55 Sherman Street, San Francisco, CA 94103

Mr. Jeffrey T. Burgos, Principal

415-241-6294

**Principal's Introduction**

Welcome to Bessie Carmichael Elementary School / FEC - indeed a gem at San Francisco's South of Market Area (SOMA)! Soon to have a brand new school facility (scheduled to open in August, 2004), the school exudes an extraordinary charm which springs forth from the nurturing and caring environment each student, staff member, parent, and community member helps create providing an atmosphere conducive for growth and learning. We invite you to come and experience Bessie Carmichael / FEC!

**Last Year's Best Achievements**

Bessie Carmichael / FEC's API last year was 701, 49 points more than the targeted API score of 652. This significant increase reinforces the hard work and dedication of the faculty and all our students - truly the school's best accomplishment last school year.

**School Snapshot**

Current Student Enrollment: 374	Grade span: K-5
02/03 Average Daily Attendance: 92.2%	Accountability Act and Improvement Programs:
Title I/State Pre-K Program: Yes	
Children's Center/Childcare: No	
Student Uniforms: No	
Building (square feet): 58,000	
Year of Construction: 1955	

**Key Elements of School Safety Plan**

The key elements in the School Safety Plan at Bessie Carmichael are pro-social and positive behavioral expectations for students and staff. Red Ribbon Week is one focus we use to provide information to students and families about prevention of substance abuse. Our School Resource Police Officer has a regular presence here as a peace officer and classroom instructor on safe behaviors. Our Elementary Advisor, School Nurse and Health Advocate provide leadership in the implementation of the School Safety Plan. Disaster procedures are practiced and refined. There is a sexual harassment policy for staff and students. An anti-slur policy is posted and enforced. Procedures are in place for safe entry and exit of students, parents and school employees to and from school. A safe and orderly environment conducive to learning at the school is maintained.

**Key Programs**

We, the students and staff, focus on ways to bring our vision to reality through class lessons and discussions, assemblies and daily interactions. The principal greets the student body each morning and discusses practices that create a safe environment. In addition, the Primary Intervention Program, Reading Recovery, Psychologist, Elementary Advisor, Social Worker, School Nurse and an active Student Success Team meet weekly to discuss strategies and interventions to assist students exhibiting need. Students are frequently recognized for achievements and the entire community contributes to the many field trips, performances and benefits received by our students.

**Focus for Improvement**

We hope to meet all of the Adequate Yearly Progress criteria to close the achievement gap. We are working hard so all ethnic group represented in our school community meet the proficiency level targets for this school year.

**Opportunities for Parent Involvement**

**Contact Person-Name:** Bobbie Washington, Alex De Guzman, Teresa Dulalas

**Phone:** 415-241-6294

At Bessie Carmichael, we strongly believe in the home-school partnership to provide our students optimal learning opportunities within and beyond the four corners of our campus. We highly encourage parents and guardians to be actively involved in the education of their children. For information on how to be actively involved at school, parents may contact Student Advisor Ms. Bobbie Washington at 241-6294, School Site Council Chairperson Ms. Teresa Dulalas at 626-7378.

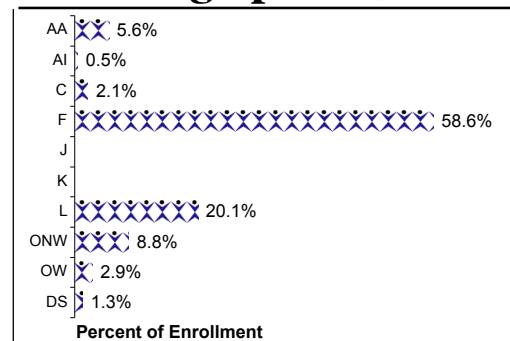
**School Description**

Rich in cultural diversity, Bessie Carmichael Elementary School / Filipino Education Center is a treasure in the heart of the South of Market Area (SOMA). Our nurturing, loving and caring campus is home to programs which focus on the development of the whole child. Our curricular programs, all designed to provide students interactive and hands-on learning for students acquiring English as a Second Language, include the English Language Development (ELD), Spanish Bilingual, and the only Filipino Bilingual and Filipino Newcomer Programs at San Francisco Unified School District.

**School Vision**

We at the Bessie Carmichael School/Filipino Education Center are committed to the creation of a caring atmosphere that stimulates learning. We strive to have all students reach their fullest potential and be respectful of themselves and others.

**Student Demographics (Fall 2003)**



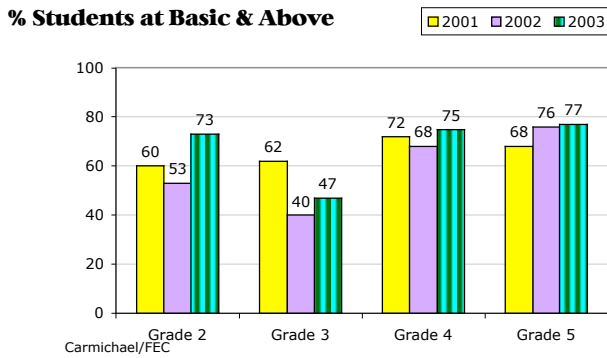
ELL 03 51.1 %

EDY 03: 51.6 %

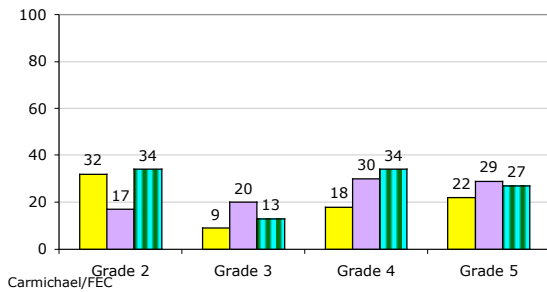
*\*These are selected highlights of the SARC. The complete SARC required by the California Department of Education can be seen at [www.sfusd.edu](http://www.sfusd.edu) under "school information."*

# Carmichael ES / FEC STUDENT ACHIEVEMENT

## CST English/Language Arts Grade Level Trends

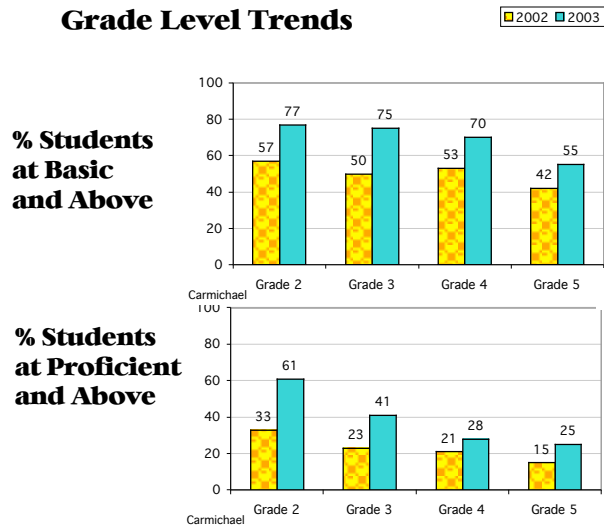


## % Students at Proficient and Above



Testing is done in the spring of the year.

## CST Math Grade Level Trends



## Spanish Assessment of Basic Education

Reference percentile	Grade 2		Grade 3		Grade 4		Grade 5	
	2001	02	01	02	01	02	01	02
Reading	32	59	60	51	*			
Math	13	76	61	48	*			
Language	46	52	64	51	*			
Spelling	63	45	57	57	0			

\*10 or fewer students

## State Assessments

API Data	2000-2001	2001-2002	2002-2003	2003-2004
Base API Score	639	660	644	695
Statewide Rank	5	5	4	4
Similar Schools Rank	7	6	2	1
Growth Target	8	7	8	5
Percent Tested in Spring	97 %	99 %	97 %	
Actual Growth	29	-23	57	
Growth API Score	668	637	701	

(Note: # indicates that no growth target was assigned in that year.)

School met all 2003 Adequate Yearly Progress (AYP) for Phase 1? No

## District Assessments

Percent of students at a performance level of 4 or higher

Writing California Writing Standards (Grade 4)		
2001	2002	2003
91.1%	71.4%	85.7%

Percent of students at Basic and above

Mathematics - MPA Math Performance Assessment (Grade 3)		
2001	2002	2003
81.0%	94.0%	86.0%

3 year trend data on performance assessments

## Comparisons Comparison of school to District and State for each grade level

Gr	2003 CST/ELA			2003 CST/Math			2003 CAT6 Reading			2003 CAT6 Math		
	School	District	State	School	District	State	School	District	State	School	District	State
2	34.0%	38%	36%	61.0%	54%	53%	31.0%	45%	46%	59.0%	61%	57%
3	13.0%	36%	33%	41.0%	52%	46%	13.0%	32%	34%	38.0%	58%	52%
4	34.0%	43%	39%	28.0%	48%	45%	28.0%	37%	35%	40.0%	54%	48%
5	27.0%	39%	36%	25.0%	37%	35%	35.0%	42%	41%	51.0%	53%	49%