

# Bryant Elementary School

# HIGHLIGHTS

1050 York Street, San Francisco, CA 94110

415-695-5780

Mr. Larry Alegre, Principal

## Principal's Introduction

Welcome to Bryant Elementary School! I believe that you will find that at Bryant Elementary School, the excitement of learning is mixed with the creation of a warm, family like atmosphere. This supports the vision of Bryant Elementary. Our vision consists of two main components: academic development and character education. When both of these components are addressed, the student receives a quality education.

## Last Year's Best Achievements

- Increase in math and language arts scores on the CAT-6, CWT, CST and MPA
- Literacy tutoring project targeting students needing extra help
- Creation of the leveled book room

## School Snapshot

Current Student Enrollment: 228	Grade span: PreK-5
02/03 Average Daily Attendance: 93.6%	Accountability Act and Improvement Programs:
Title I/State Pre-K Program: No	
Children's Center/Childcare: Yes	
Student Uniforms: Yes	
Building (square feet): 33,100	
Year of Construction: 1979	

## Key Elements of School Safety Plan

- Insure a safe, secure school and learning environment relative to cleanliness, management of the facility and student behavior, consistent with state requirements.
- Implement tobacco, drug and violence prevention programs.
- Provide student and parent support and education programs.
- Provide professional development in Conflict Management, TRIBES, health education and Crisis Management.

## Key Programs

- Morning greeting assemblies.
- Schoolwide Conflict Management training of teachers and students; students become conflict managers.
- Differentiated instruction for all students in all subject areas.
- Implementing state and district curriculum and performance standards.
- Providing professional development for all staff to meet the individual needs of all students.
- Afterschool tutorial programs and child care available
- Afterschool sports program
- Reading Recovery/Descubriendo La Lectura
- Healthy Start Program
- On site mental health programs

## Focus for Improvement

All students will read at their appropriate grade level through the improvement of the literacy teaching/learning process.

## Opportunities for Parent Involvement

Contact Person-Name: Laura Fankushen

Phone: 415 695-5780 ext 3007

Our parent liaison organizes through the Healthy Start Program work with parents/caregivers to volunteer in classrooms, go on field trips, work in the library, and participate in planning cultural presentations. The Parent/Staff Organization sponsors picnics, fundraisers and parent education sessions.

## School Description

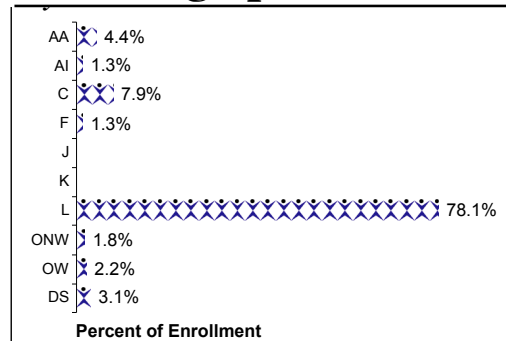
Bryant School is a K-5 year-round school located in the heart of San Francisco's Mission District. Our small two story school has colorful murals and brightens the inner city street on which it is located. A dedicated staff and long hours of operation herald Bryant as a constant force in bettering the lives of our families. Bryant Children's Center provides both preschool and extended day school age care. An Expanded Learning Grant is helping to augment our afterschool program offerings.

We provide an active learning environment for students, parents, and teachers. Every classroom engages students in hands-on activities, from Science/Mathematics through Language Arts. English Language Development (ELD) classes and Spanish bilingual classes help meet the linguistic needs of our student population.

## School Vision

Bryant Elementary School's high expectations for staff, parents, caregivers, and students foster creativity and academic excellence. Bryant emphasizes inclusiveness and creates a welcome environment for all families, cultures and languages. Bryant provides a community where members are given tools for peaceful conflict resolution.

## Student Demographics (Fall 2003)



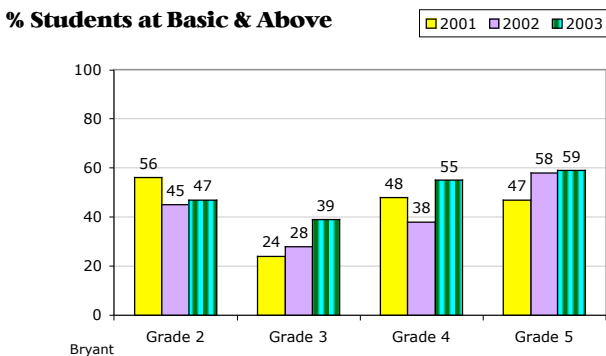
ELL 03 69.7 %

EDY 03: 68 %

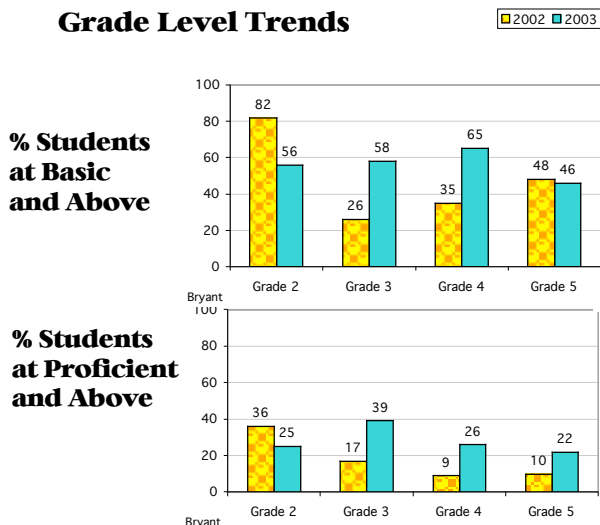
*\*These are selected highlights of the SARC. The complete SARC required by the California Department of Education can be seen at [www.sfusd.edu](http://www.sfusd.edu) under "school information."*

# Bryant ES STUDENT ACHIEVEMENT

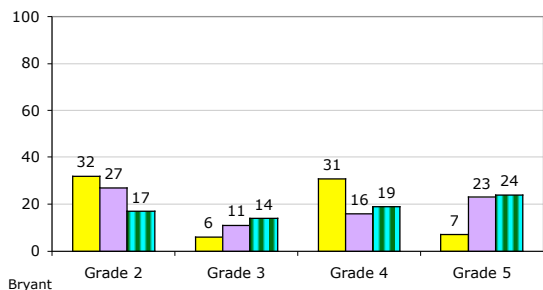
## CST English/Language Arts Grade Level Trends



## CST Math Grade Level Trends



## % Students at Proficient and Above



## Spanish Assessment of Basic Education

Reference percentile	Grade 2		Grade 3		Grade 4		Grade 5	
	2001	02	01	02	01	02	01	02
Reading	56	73	66	50	78	55	66	65
Math	63	82	64	37	73	71	67	88
Language	75	77	73	52	79	64	68	82
Spelling	73	86	60	43	77	62	64	69

\*10 or fewer students

Testing is done in the spring of the year.

## State Assessments

API Data	2000-2001	2001-2002	2002-2003	2003-2004
Base API Score	596	594	573	623
Statewide Rank	4	3	2	2
Similar Schools Rank	5	4	3	4
Growth Target	10	10	11	9
Percent Tested in Spring	100 %	100 %	100 %	
Actual Growth	-5	-25	66	
Growth API Score	<b>591</b>	<b>569</b>	<b>639</b>	

(Note: # indicates that no growth target was assigned in that year.)

School met all 2003 Adequate Yearly Progress (AYP) for Phase 1? No

## Comparisons Comparison of school to District and State for each grade level

Gr	2003 CST/ELA			2003 CST/Math			2003 CAT6 Reading			2003 CAT6 Math		
	School	District	State	School	District	State	School	District	State	School	District	State
2	17.0%	38%	36%	25.0%	54%	53%	22.0%	45%	46%	47.0%	61%	57%
3	14.0%	36%	33%	39.0%	52%	46%	17.0%	32%	34%	44.0%	58%	52%
4	19.0%	43%	39%	26.0%	48%	45%	19.0%	37%	35%	35.0%	54%	48%
5	24.0%	39%	36%	22.0%	37%	35%	24.0%	42%	41%	43.0%	53%	49%

## District Assessments

Percent of students at a performance level of 4 or higher

Writing California Writing Standards (Grade 4)		
2001	2002	2003
87.5%	81.3%	80.8%

Percent of students at Basic and above

Mathematics - MPA Math Performance Assessment (Grade 3)		
2001	2002	2003
53.0%	79.0%	89.0%

3 year trend data on performance assessments