

Buena Vista Alternative School

HIGHLIGHTS

2641 25th Street, San Francisco, CA 94110

415-695-5875

Mr. Mark Alvarado, Principal

Principal's Introduction

Our world is rapidly shrinking. It is increasingly dependent upon communication and understanding among people of diverse beliefs and backgrounds. Buena Vista provides students an opportunity to gain a comparative advantage through bilingualism. Parents who select this Spanish immersion program are committed to challenge and stimulate their children's cognitive, social and linguistic development. We are very proud of the academic and cultural strength that Buena Vista provides students and welcome you to look at our program and our wonderful community.

Last Year's Best Achievements

- Significantly surpassed API subgroup targets:
- Latino subgroup '02-'03 target of 574 - performance was 602
 - White subgroup '02-'03 target of 800 - performance was 850
 - S Disadv subgroup '02-'03 target of 525 - performance was 535

School Snapshot

Current Student Enrollment: 365	Grade span: K-5
02/03 Average Daily Attendance: 94.1%	Accountability Act and Improvement Programs:
Title I/State Pre-K Program: Yes	
Children's Center/Childcare: No	
Student Uniforms: No	
Building (square feet): 32,500	
Year of Construction: 1969	

Key Elements of School Safety Plan

All staff members assume the responsibility of insuring that we maintain a safe and secure school climate at Buena Vista. We utilize community circles in all grades to encourage dialogue and self-expression and practice conflict management activities that are aimed at increasing our students' responsibility for maintaining a healthy school environment. At Buena Vista we also have a School Site Crisis Response Team made up of teachers and the Principal who are responsible for implementing our Emergency Disaster Plan. The plan is currently being studied and revised to provide us with the best tool to help us respond in an emergency situation.

Key Programs

Our school community is dedicated to fostering a learning environment that encourages academic excellence and personal growth. We promote the idea that we are a "Community of Learners" and that we participate in an atmosphere of concern and mutual respect. A committed staff provides encouragement, guidance and positive reinforcement for all students. Teachers use a rich range of activities to build strong communities in their classrooms. In addition, we have an active Student Success Team to help monitor and guide student learning.

Focus for Improvement

Schoolwide academic focus on Reading is driving professional development on Guided Reading.

Opportunities for Parent Involvement

Contact Person-Name: Mark Alvarado, Principal * Judy Diaz, Secretary

Phone: 695-5875

Parents volunteer regularly in the classrooms to enhance grade level programs. Parents are involved on all ends of the School Site Coalition making decisions affecting the school plan and program funding. The Latino Parents Group provides additional support to our school community. All parents are an integral component to the success of our program and are highly valued resources.

School Description

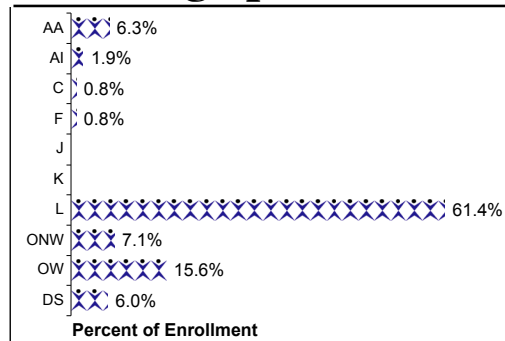
Buena Vista Alternative School's Spanish Two-Way Immersion Program offers the native English speaker and the native Spanish speaker an opportunity to become bilingual and biliterate while developing an appreciation for cultural diversity by:

- developing communicative fluency and literacy in an internationally significant language;
- developing and enriching English language skills;
- promoting academic achievement commensurate with the child's ability and grade level; and,
- encouraging understanding and appreciation for another linguistic and cultural identification.

School Vision

Provide an opportunity to become bilingual and biliterate while developing an appreciation for cultural diversity. We meet these challenges through innovative and consistent strategies that engage all students in learning, self esteem, and creativity.

Student Demographics (Fall 2003)



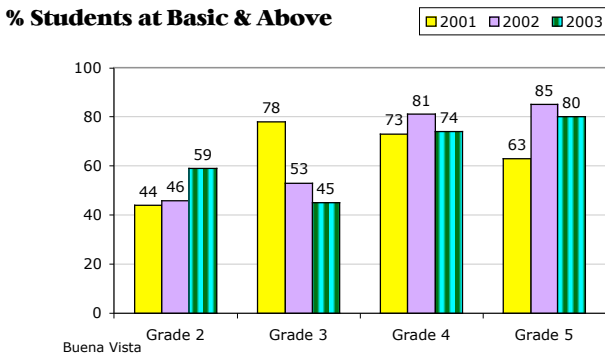
ELL 03 41.1 %

EDY 03: 49.6 %

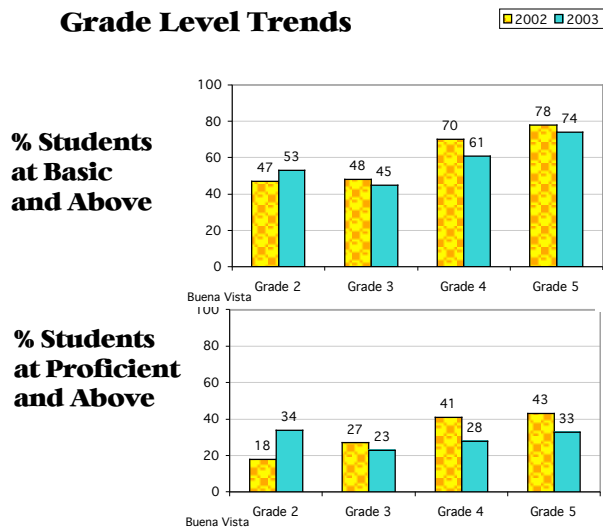
**These are selected highlights of the SARC. The complete SARC required by the California Department of Education can be seen at www.sfusd.edu under "school information."*

Buena Vista ES STUDENT ACHIEVEMENT

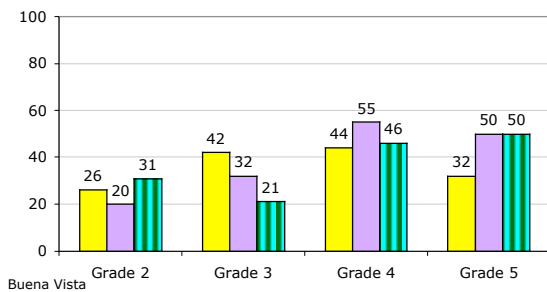
CST English/Language Arts Grade Level Trends



CST Math Grade Level Trends



% Students at Proficient and Above



Spanish Assessment of Basic Education

Reference percentile	Grade 2		Grade 3		Grade 4		Grade 5	
	2001	02	01	02	01	02	01	02
Reading	65	78	*	85	75	84	68	87
Math	38	80	*	88	78	92	67	94
Language	66	79	*	84	83	88	72	91
Spelling	69	85	*	77	83	82	61	86

*10 or fewer students

Testing is done in the spring of the year.

State Assessments

API Data	2000-2001	2001-2002	2002-2003	2003-2004
Base API Score	682	651	682	681
Statewide Rank	6	4	5	4
Similar Schools Rank	2	1	2	1
Growth Target	6	7	6	6
Percent Tested in Spring	96 %	100 %	99 %	
Actual Growth	-44	33	3	
Growth API Score	638	684	685	

(Note: # indicates that no growth target was assigned in that year.)

School met all 2003 Adequate Yearly Progress (AYP) for Phase 1? No

Comparisons Comparison of school to District and State for each grade level

District Assessments

Percent of students at a performance level of 4 or higher

Writing California Writing Standards (Grade 4)		
2001	2002	2003
87.2%	83.0%	69.6%

Percent of students at Basic and above

Mathematics - MPA Math Performance Assessment (Grade 3)		
2001	2002	2003
74.0%	95.0%	62.0%

3 year trend data on performance assessments

2003 CST/ELA

% students achieving at proficient or advanced level

2003 CST/Math

% students achieving at proficient or advanced level

2003 CAT6 Reading

% tested students scoring at or above 50th percentile (nat'l average)

2003 CAT6 Math

% tested students scoring at or above 50th percentile (nat'l average)

Gr	School	District	State	School	District	State	School	District	State	School	District	State
2	31.0%	38%	36%	34.0%	54%	53%	47.0%	45%	46%	41.0%	61%	57%
3	21.0%	36%	33%	23.0%	52%	46%	30.0%	32%	34%	29.0%	58%	52%
4	46.0%	43%	39%	28.0%	48%	45%	44.0%	37%	35%	31.0%	54%	48%
5	50.0%	39%	36%	33.0%	37%	35%	47.0%	42%	41%	51.0%	53%	49%