

# El Dorado Elementary School

# HIGHLIGHTS

70 Delta Street, San Francisco, CA 94134

415-330-1537

Dr. Maria Manuel, Principal

## Principal's Introduction

Every person at El Dorado is an important unique being. Students will have access to a balanced program in the area of language.

## Last Year's Best Achievements

Ranked among the top ten schools to make the most significant gains on the CAT6 test.

## School Snapshot

Current Student Enrollment:	314	Grade span:	K-5
02/03 Average Daily Attendance:	91.9%	Accountability Act and	Improvement Programs:
Title I/State Pre-K Program:	No	II/USP Cohort 2	
Children's Center/Childcare:	No		
Student Uniforms:	Yes		
Building (square feet):	30,300		
Year of Construction:	1953		

## Key Elements of School Safety Plan

All members of the El Dorado community strive to maintain an orderly and safe learning environment. Parents and staff work to improve emergency preparedness. A Student Advisor supervises the school safety patrol. A Police Department community outreach officer visits the school to promote and support student safety and appropriate conduct.

## Key Programs

Student Council Elections and Events; El Dorado Kickball League; After School Extended Learning Programs: Student Conflict managers; Student work is regularly and profusely displayed throughout the building; Literacy and Math peer coaches to support teaching staff; PIP Program to provide mental health services to students; Student Advisor provides support for schoolwide behavior program; schoolwide positive behavior program; Teachers utilize a variety of teaching methods and strategies in order to meet the needs of all learners; SDC students are mainstreamed in regular education; Reading buddies provide cross grade level experiences for students. Fifth grade students experience a program that will transition them into middle school.

## Focus for Improvement

A schoolwide articulated and consistent base reading program will provide both teachers and students a clear path to literacy.

## Opportunities for Parent Involvement

Contact Person-Name: Dr. Maria Manuel

Phone: 415-330-1537

Parents are encouraged to participate in the PTA, the School Site Council or as school volunteers and invited to attend special events such as the International Potluck, Family Literacy Night, and Family Math Night. Parents interested in school programs can call the school office. Spanish and Chinese translations are available for all meetings and events.

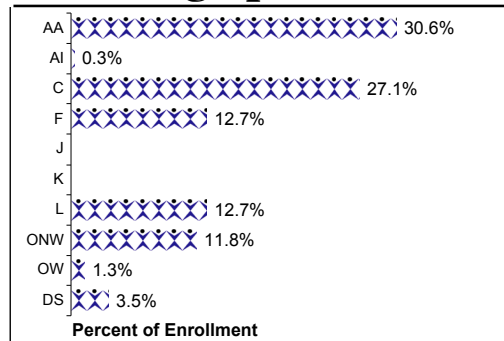
## School Description

El Dorado Elementary School, serves an ethnically diverse student population. The school is located in Visitation Valley. Each member of the El Dorado staff shares in the belief that all children can learn. Members of the school community work together to create an environment that is focused on the success of each student, both academically and socially. The School Site Council, consisting of community members, parents, teachers, paraprofessionals, and school administration, assists with curriculum and program development. El Dorado is an excellent learning environment that provides students with an academic background that will serve them well throughout their lives.

## School Vision

All stakeholders of El Dorado School are dedicated to providing a respectful environment in which students explore and develop the knowledge and skills needed to function as responsible citizens in our society.

## Student Demographics (Fall 2003)



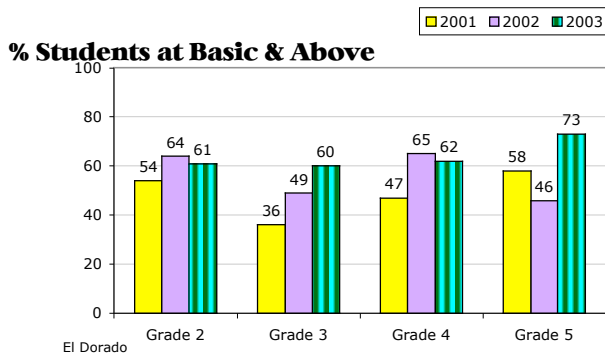
ELL 03: 32.8%

EDY 03: 52.5%

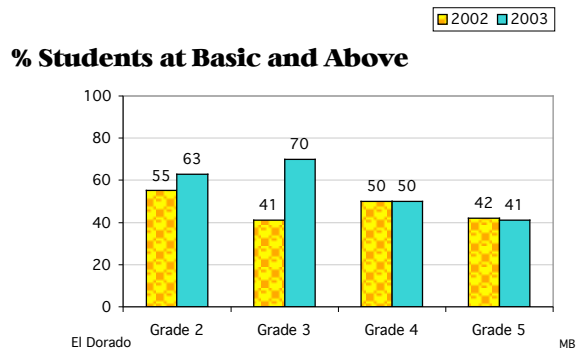
*\*These are selected highlights of the SARC. The complete SARC required by the California Department of Education can be seen at [www.sfusd.edu](http://www.sfusd.edu) under "school information."*

# El Dorado ES STUDENT ACHIEVEMENT

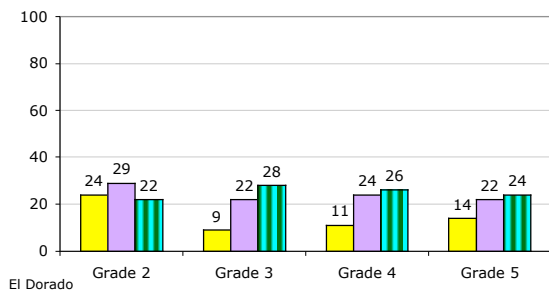
## CST English/Language Arts Grade Level Trends



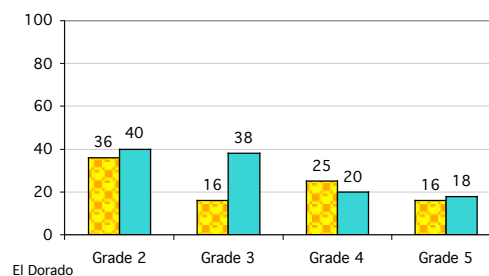
## CST Math Grade Level Trends



## % Students at Proficient and Above



## % Students at Proficient and Above



Testing is done in the spring of the year.

## State Assessments

API Data	2000-2001	2001-2002	2002-2003	2003-2004
Base API Score	506	593	621	662
Statewide Rank	2	3	3	3
Similar Schools Rank	1	2	1	1
Growth Target	15	10	9	7
Percent Tested in Spring	94 %	92 %	99 %	
Actual Growth	90	16	51	
<b>Growth API Score</b>	<b>596</b>	<b>609</b>	<b>672</b>	

(Note: # indicates that no growth target was assigned in that year.)

## District Assessments

Percent of students at a performance level of 4 or higher

Writing California Writing Standards (Grade 4)		
2001	2002	2003
79.6%	71.2%	71.4%

Percent of students at Basic and above

Mathematics - MPA Math Performance Assessment (Grade 3)		
2001	2002	2003
59.0%	62.0%	63.0%

3 year trend data on performance assessments

School met all 2003 Adequate Yearly Progress (AYP) for Phase 1? No

## Comparisons Comparison of school to District and State for each grade level

Gr	2003 CST/ELA			2003 CST/Math			2003 CAT6 Reading			2003 CAT6 Math		
	School	District	State	School	District	State	School	District	State	School	District	State
2	22.0%	38%	36%	40.0%	54%	53%	32.0%	45%	46%	47.0%	61%	57%
3	28.0%	36%	33%	38.0%	52%	46%	26.0%	32%	34%	43.0%	58%	52%
4	26.0%	43%	39%	20.0%	48%	45%	20.0%	37%	35%	28.0%	54%	48%
5	24.0%	39%	36%	18.0%	37%	35%	31.0%	42%	41%	39.0%	53%	49%