

# Dr. George Washington Carver Elementary School



1360 Oakdale Avenue, San Francisco, CA 94124

415-330-1540

Mrs. Emily Wade-Thompson, Principal

## Principal's Introduction

Dr. G.W. Carver Academic Elementary School is one of the hidden treasures of Bayview-Hunter's Point. Our school is endowed with a nurturing, dedicated staff, many of whom have worked here for ten to twenty-five years! I have taught in BVHP for 26 years, and have been a principal since 1998. My personal goals for students are to show growth academically, emotionally and socially; to appreciate and participate in the arts; and to learn a second language. I will continue toward these goals during my tenure.

## Last Year's Best Achievements

Due to focused effort as a village to improve teaching and learning in reading, our API score increased from 670 to 698! We exceeded our goal of 677. We are proud of this outcome, and continue to make adjustments to increase student learning.

## School Snapshot

Current Student Enrollment:	292	Grade span:	K-5
02/03 Average Daily Attendance:	91.2%	Accountability Act and	Improvement Programs:
Title I/State Pre-K Program:	No		
Children's Center/Childcare:	No		
Student Uniforms:	Yes		
Building (square feet):	45,500		
Year of Construction:	1974		

## Key Elements of School Safety Plan

We work hard to keep an orderly, safe environment for learning through high expectations and protocols for staff, students and visitors. We have developed a schoolwide Discipline Plan to promote responsibility and we create opportunities for student leadership. A full-time counselor works with individuals, groups and families to aid children's stability and progress. A new Telemedicine Project will aid students with asthma by providing direct contact with their doctors and promote greater attendance by these children. Carver students receive 30 hours of health and drug education on a variety of topics, using school and community resources. Police and Fire Department community relations persons visit our school to promote safety. Parents and staff work to improve emergency preparedness. Yards and bus lines are adequately monitored.

## Key Programs

Carver staff support each other as a village and consistently plan together. We maintain high expectations in and out of the classroom. Our students wear uniforms, which helps to create an atmosphere of focused learning. Through our Caring School Community grant, Primary Intervention Program (PIP) and other efforts, we are increasing positive relations schoolwide. Our team of auxiliary personnel assist families and students in getting the most from their school experience. Our Discipline Plan guides staff and students with techniques to prevent, as well as respond to inappropriate behavior. We teach social skills through physical education, the virtues of Ma`at, buddy classes, cooperative learning and Tribes, and by developing leadership. Students are honored for positive efforts. We have monthly "celebrations of excellence" to promote school pride and fun!

## Focus for Improvement

We have several goals for improvement: vocabulary development, reading comprehension and writing, and improving our absence and tardy rates to increase student learning time.

## Opportunities for Parent Involvement

Contact Person-Name: Gisele Lintz, Parent Liaison

Phone: (415) 330-1540

Our organized activities for parents include educational workshops, a Parent Resource Center to promote ways families can help their children advance in academic goals. We have active school governance committees and fundraising. We encourage volunteers and Room Parents and recognize them as Carver VIPs!

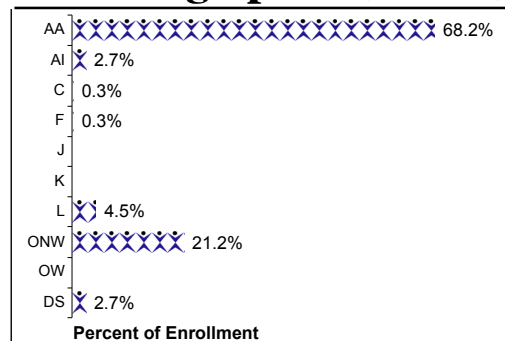
## School Description

Dr. George Washington Carver Academic Elementary School holds high expectations for a culturally diverse student population in a structured environment. We stress academic excellence for all students by guiding students to perform to their best ability and conducting themselves appropriately. Our school makes available to students a variety of enrichment opportunities and an After School Program. We work together as a village to educate our students, collaborating often as grade levels, and welcoming parents, community agencies and businesses as partners. Historically, Carver has been an award-winning school, and we are striving to maintain the excellence we expect of ourselves and the children.

## School Vision

Students will leave Dr. G. W. Carver with a strong foundation in literacy and mathematics. They will demonstrate academic and social preparedness to meet the expectations and challenges of the 21st Century – educationally and socially.

## Student Demographics (Fall 2003)



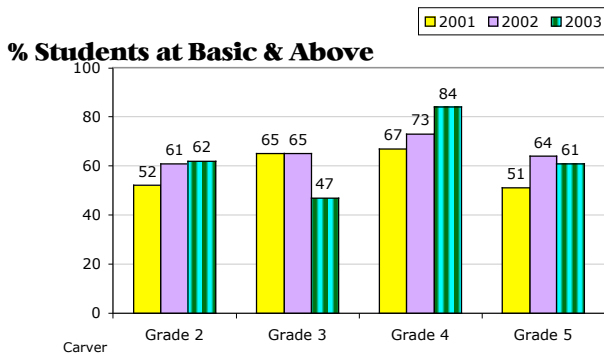
ELL 03: 4.5 %

EDY 03: 41.4 %

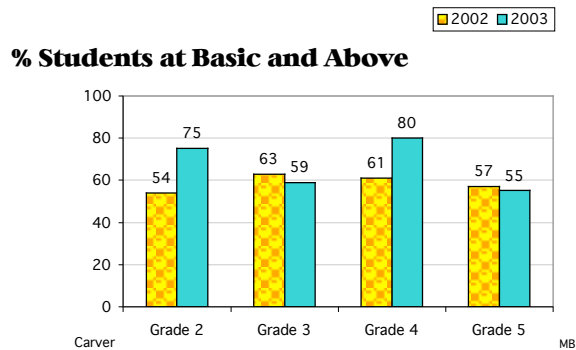
*\*These are selected highlights of the SARC. The complete SARC required by the California Department of Education can be seen at [www.sfusd.edu](http://www.sfusd.edu) under "school information."*

# Carver ES STUDENT ACHIEVEMENT

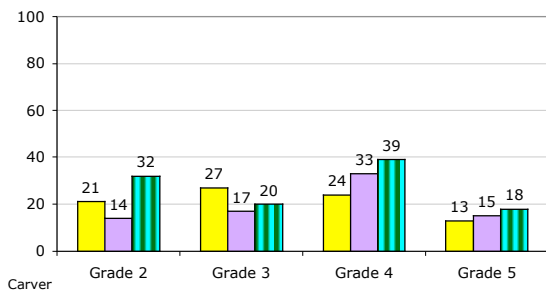
## CST English/Language Arts Grade Level Trends



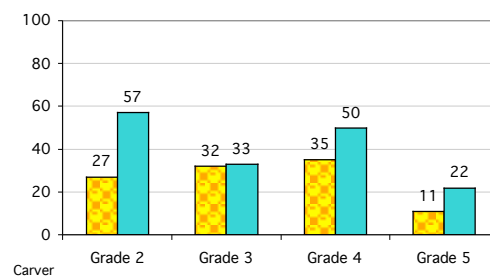
## CST Math Grade Level Trends



## % Students at Proficient and Above



## % Students at Proficient and Above



Testing is done in the spring of the year.

## State Assessments

API Data	2000-2001	2001-2002	2002-2003	2003-2004	
Base API Score	682	605	671	680	
Statewide Rank	6	3	5	4	(Note: # indicates that no growth target was assigned in that year.)
Similar Schools Rank	9	5	7	8	
Growth Target	6	10	6	6	
Percent Tested in Spring	100 %	98 %	98 %		
Actual Growth	-91	65	27		
Growth API Score	591	670	698		

## District Assessments

Percent of students at a performance level of 4 or higher

Writing California Writing Standards (Grade 4)		
2001	2002	2003
59.6%	79.2%	79.5%

Percent of students at Basic and above

Mathematics - MPA Math Performance Assessment (Grade 3)		
2001	2002	2003
67.0%	78.0%	80.0%

3 year trend data on performance assessments

School met all 2003 Adequate Yearly Progress (AYP) for Phase 1? Yes

## Comparisons Comparison of school to District and State for each grade level

Gr	2003 CST/ELA % students achieving at proficient or advanced level			2003 CST/Math % students achieving at proficient or advanced level			2003 CAT6 Reading % tested students scoring at or above 50th percentile (nat'l average)			2003 CAT6 Math % tested students scoring at or above 50th percentile (nat'l average)		
	School	District	State	School	District	State	School	District	State	School	District	State
2	32.0%	38%	36%	57.0%	54%	53%	32.0%	45%	46%	63.0%	61%	57%
3	20.0%	36%	33%	33.0%	52%	46%	16.0%	32%	34%	31.0%	58%	52%
4	39.0%	43%	39%	50.0%	48%	45%	32.0%	37%	35%	55.0%	54%	48%
5	18.0%	39%	36%	22.0%	37%	35%	22.0%	42%	41%	29.0%	53%	49%