

John Yehall Chin Elementary School

HIGHLIGHTS

350 Broadway, San Francisco, CA 94133
415-291-7946

Mr. Allen Lee, Principal

Principal's Introduction

"We like it here because this is the best kept secret in town!" "We like it here because this school is small and you all know the names of all the students." "We like it here because the adults don't let politics get in the way of teaching and learning."

These are just some of the testimonials that we hear uttered on a daily basis here at John Yehall Chin Elementary School. Here at JYC, we relish simplifying teaching and learning for the sake of the students. Being efficient and productive are the two characteristics that we treasure the most.

Last Year's Best Achievements

Through the guided and efficient use of recently purchased test preparation materials, JYC's API leaped dramatically to 826, surpassing our state growth target by a wide margin. This highlights JYC's commitment toward academic excellence.

School Snapshot

Current Student Enrollment: 222	Grade span: K-5
02/03 Average Daily Attendance: 97.7%	Accountability Act and Improvement Programs:
Title I/State Pre-K Program: No	
Children's Center/Childcare: No	
Student Uniforms: Yes	
Building (square feet): 23,100	
Year of Construction: 1914	

Key Elements of School Safety Plan

The key elements of our School Safety Plan help us promote positive behavior and high academic expectations for our students. Child abuse reporting and disaster/emergency procedures are posted and enforced. We want to ensure that our school is a safe and secure learning environment for our students.

Key Programs

Our school implements a Student of the Week program, a School Pride Ticket program, and a Good Citizens Ticket program to help us promote a positive learning environment.

Our staff attends professional development that promotes a positive learning classroom environment. Our School Psychologist and Resource Specialist conduct ongoing Student Success Team meetings on a weekly basis to discuss strategies and interventions for at-risk students.

In the 4th and 5th grade, we have put together a Multigraded Project Based Accelerated Learning class in order to extend learning opportunities for our GATE identified students as well as our students with high potential.

Focus for Improvement

Our students will show growth in the area of physical education and in every modality of assessment from all levels.

Opportunities for Parent Involvement

Contact Person-Name: Allen A. Lee

Phone: (415) 291-7946

We have an active parent involvement program. The Parents Teachers Club meets once a month along with our SSC, SAC, and ELAC groups. In addition, parents volunteer in the classrooms and assist on field trips. JYC communicates regularly with our parents through newsletters and written notes.

School Description

John Yehall Chin Elementary School, located at the gateway to San Francisco's Financial District, has been dubbed by many as "a hidden jewel in SFUSD" due to our small student population and relative anonymity.

Because our school is small, JYC can give its students personalized instruction. Instruction is always geared toward the students' unique needs. Hands-on activities are utilized to foster deeper understanding. JYC expects that its students master basic skills in reading, writing, and mathematics. Our state of the art PC & Mac computer lab allow our students to access the Internet for research purposes.

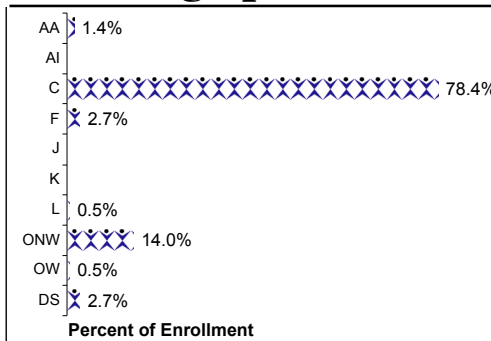
Have we piqued your interest? If so, come by and check us out!

School Vision

We are here for the children.

Our goal is to produce literate and responsible leaders of the 21st century. JYC students will value diversity, care for the environment, and last but certainly not least, display concern for the well-being of others.

Student Demographics (Fall 2003)



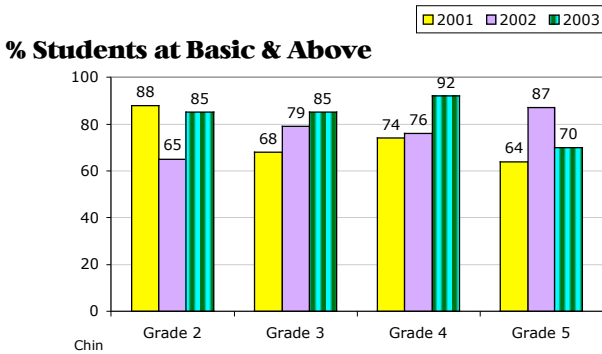
ELL 03: 78.8%

EDY 03: 40.1%

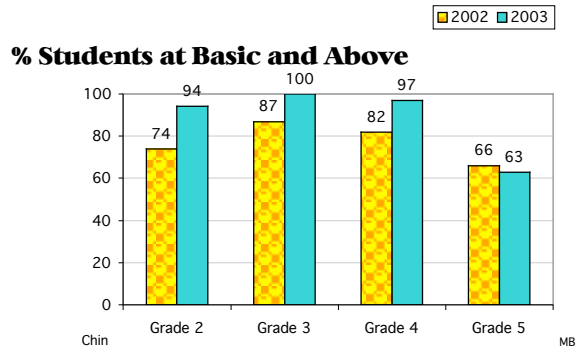
**These are selected highlights of the SARC. The complete SARC required by the California Department of Education can be seen at www.sfusd.edu under "school information."*

Chin ES STUDENT ACHIEVEMENT

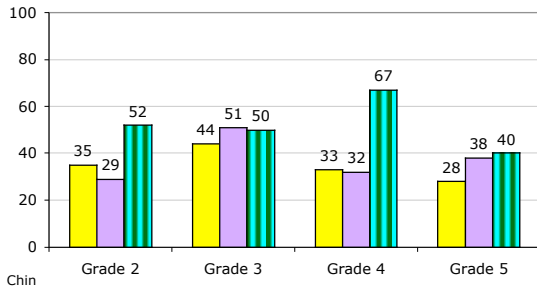
CST English/Language Arts Grade Level Trends



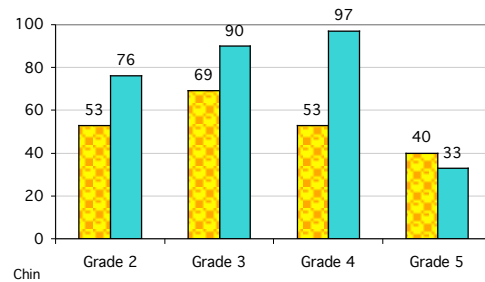
CST Math Grade Level Trends



% Students at Proficient and Above



% Students at Proficient and Above



Testing is done in the spring of the year.

State Assessments

API Data	2000-2001	2001-2002	2002-2003	2003-2004	
Base API Score	722	745	763	832	
Statewide Rank	7	7	8	9	(Note: # indicates that no growth target was assigned in that year.)
Similar Schools Rank	10	9	10	10	
Growth Target	4	3	2	A	
Percent Tested in Spring	96 %	100 %	100 %		
Actual Growth	27	37	63		
Growth API Score	749	782	826		

District Assessments

Percent of students at a performance level of 4 or higher

Writing California Writing Standards (Grade 4)		
2001	2002	2003
84.4%	87.9%	91.9%

Percent of students at Basic and above

Mathematics - MPA Math Performance Assessment (Grade 3)		
2001	2002	2003
86.0%	95.0%	88.0%

3 year trend data on performance assessments

School met all 2003 Adequate Yearly Progress (AYP) for Phase 1? Yes

Comparisons Comparison of school to District and State for each grade level

Gr	2003 CST/ELA			2003 CST/Math			2003 CAT6 Reading			2003 CAT6 Math		
	School	District	State	School	District	State	School	District	State	School	District	State
2	52.0%	38%	36%	76.0%	54%	53%	42.0%	45%	46%	76.0%	61%	57%
3	50.0%	36%	33%	90.0%	52%	46%	33.0%	32%	34%	82.0%	58%	52%
4	67.0%	43%	39%	97.0%	48%	45%	51.0%	37%	35%	97.0%	54%	48%
5	40.0%	39%	36%	33.0%	37%	35%	40.0%	42%	41%	54.0%	53%	49%