

# Alvarado Elementary School

# HIGHLIGHTS

625 Douglass Street, San Francisco, CA 94114  
415-695-5695

Mr. David Weiner, Principal

## Principal's Introduction

Alvarado is a premier elementary school focused on improving the achievement levels for all of its students. All of our classrooms offer a comprehensive, rigorous, and standards-based instructional program in line with state and district requirements. We believe that all students can learn and that it is the responsibility of parents, teachers, and the school community to help children realize their potential.

## Last Year's Best Achievements

African American Assembly, Woman's History Assembly, Cinco de Mayo Assembly, LGBT Pride Assembly. Improvement of Alvarado students on standardized tests.

## School Snapshot

2004/2005 Student Enrollment: 451	Grade span: K-5
03/04 Average Daily Attendance: 96.1%	Accountability Act and Improvement Programs:
Title I/State Pre-K Program: No	
Children's Center/Childcare: No	
Student Uniforms: No	
Building (square feet): 51,700	
Year of Construction: 1926	

## Key Elements of School Safety Plan

- Evacuation for fire, earthquake, emergencies
- Resource/administrative staff supporting classrooms
- Schoolwide Tribes curriculum fully implemented
- Crisis Intervention
- School police officer to discuss use of 911, crossing streets, safety

## Key Programs

- Dual language Immersion Program (Spanish/English).
- English Language Development general education program.
- Bilingual assemblies to focus on learning, school diversity, language development, and culture, including singing, dancing and special presentations.
- Full time science and technology teachers.
- Class size reduction in 4/5 grades.
- Arts programs for all students.
- Free and fee-based after school programs.

## Focus for Improvement

- Increasing the achievement of our Economically Disadvantaged Youth.
- Providing additional services for our at-risk students.

## Opportunities for Parent Involvement

Contact Person-Name: Nancy Hawkins

Phone: 695-5699

Classroom tutoring, library, classroom assistance, fundraising, literacy committee, arts committee, school advisory committees, health fair, PTA committees and offices, yard supervision, games, afterschool tutoring. Talents are matched to needs in the school.

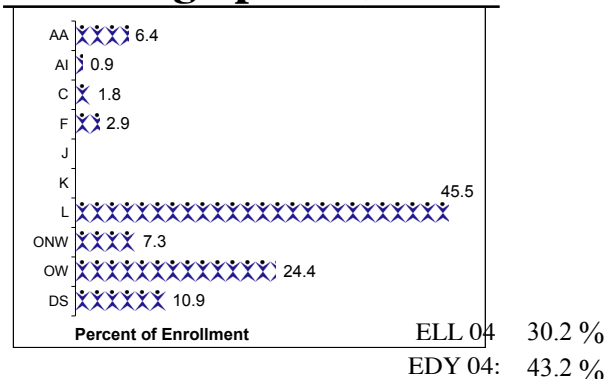
## School Description

Alvarado is a unique school that offers a challenging and enriching academic curriculum. Our classrooms create instructional challenges to meet the needs of each of our students and enable them to achieve their full potential. We offer an outstanding Spanish Immersion Program, Perceptual Motor Program, Computer Lab, Science Lab, and various Visual and Performing Arts. Our after school programs include tutorial, enrichment clubs and supervised play activities. We also have a fee-based after school childcare center. Alvarado views itself as a school family committed to the academic, social, and emotional growth of each student. We draw our students from Noe Valley, Mission, Glen Park, Bernal Heights, and Visitacion Valley neighborhoods. We provide an environment that celebrates our multicultural diversity and are proud of the positive, warm feeling that is present both in our school and within the three communities that we serve.

## School Vision

- The Alvarado School Community knows every child can learn and succeed at high levels.
- We will equip each child with critical thinking and problem-solving skills.
- We will treat each child with dignity and respect.

## Student Demographics (Fall 2004)



*\*These are selected highlights of the SARC. The complete SARC required by the California Department of Education can be seen at [www.sfusd.edu](http://www.sfusd.edu) under "school information."*

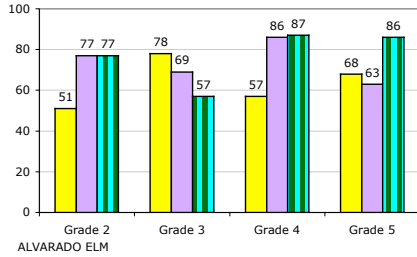
# Alvarado ES STUDENT ACHIEVEMENT

## State Assessments

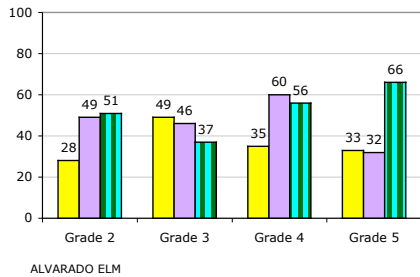
### CST English/Language Arts Grade Level Trends

2002 2003 2004

#### % Students at Basic & Above



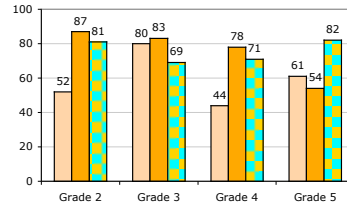
#### % Students at Proficient and Above



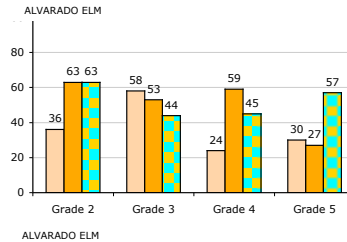
### CST Math Grade Level Trends

2002 2003 2004

#### % Students at Basic and Above



#### % Students at Proficient and Above



### Spanish Assessment of Basic Education

Reference percentile	Grade 2		Grade 3		Grade 4		Grade 5	
	2003	04	03	04	03	04	03	04
Reading	73	82	91	85		82	**	**
Math	70	81	91	93		81	**	**
Language	69	84	92	85		83	**	**
Spelling	68	70	78	85		75	**	**

\*10 or fewer students

Testing is done in the spring of the year.

### API Data

	2000-2001	2001-2002	2002-2003	2003-2004
Base API Score	689	676	689	765
Statewide Rank	6	5	5	7
Similar Schools Rank	9	6	3	7
Growth Target	6	6	6	2
Percent Tested in Spring	98 %	98 %	99 %	100 %
Actual Growth	-14	17	81	21
<b>Growth API Score</b>	<b>675</b>	<b>693</b>	<b>770</b>	<b>786</b>

(Note: A indicates that no growth target was assigned in that year.)

School met all 2004 Adequate Yearly Progress (AYP) for Phase 1? No

3 year trend data on performance assessments

Writing California Writing Standards (Grade 4)			
2002	2003	2004	
71.9%	84.9%	73.2%	

Percent of students at a performance level of 4 or higher

CAT6 - 2 year trend			
Reading NPR		Math NPR	
2003	2004	2003	2004
51	57	61	62

### Comparisons Comparison of school to District and State for each grade level

#### 2004 CST/ELA

% students achieving at proficient or advanced level

#### 2004 CST/Math

% students achieving at proficient or advanced level

#### 2004 CAT6 Reading

% tested students scoring at or above 50th percentile (nat'l average)

#### 2004 CAT6 Math

% tested students scoring at or above 50th percentile (nat'l average)

Gr	2004 CST/ELA			2004 CST/Math			2004 CAT6 Reading			2004 CAT6 Math		
	School	District	State	School	District	State	School	District	State	School	District	State
2	51%	38%	36%	63%	55%	51%	60%	47%	47%	76%	63%	59%
3	37%	33%	30%	44%	52%	48%	40%	33%	35%	50%	56%	54%
4	56%	43%	40%	45%	49%	45%	53%	37%	36%	58%	54%	49%
5	66%	46%	40%	57%	40%	38%	63%	42%	41%	75%	55%	50%