

# Buena Vista Alternative School

# HIGHLIGHTS

2641 25th Street, San Francisco, CA 94110  
415-695-5875

Mr. Mark Alvarado, Principal

## Principal's Introduction

Our world is rapidly shrinking. It is increasingly dependent upon communication and understanding among people of diverse beliefs and backgrounds. Buena Vista provides students an opportunity to gain a comparative advantage through bilingualism. Parents who select this Spanish immersion program are committed to challenge and stimulate their children's cognitive, social and linguistic development. We are very proud of the academic and cultural strength that Buena Vista provides students and welcome you to look at our program and our wonderful community.

## Last Year's Best Achievements

English Language Learners are the targeted group of Buena Vista's Title VII grant. This subgroup through many interventions and safety nets has continued to improve academic achievement steadily over the last three years.

## School Snapshot

2004/2005 Student Enrollment: 367	Grade span: PreK-5
03/04 Average Daily Attendance: 93.4%	Accountability Act and Improvement Programs:
Title I/State Pre-K Program: Yes	
Children's Center/Childcare: No	
Student Uniforms: No	
Building (square feet): 32,500	
Year of Construction: 1969	

## Key Elements of School Safety Plan

All staff members assume the responsibility of insuring that we maintain a safe and secure school climate at Buena Vista. We utilize community circles in all grades to encourage dialogue and self-expression and practice conflict management activities that are aimed at increasing our students' responsibility for maintaining a healthy school environment. At Buena Vista we also have a School Site Crisis Response Team made up of teachers and the Principal that is responsible for implementing our Emergency Disaster Plan. The plan is currently being studied and revised to provide us with the best tool to help us respond in an emergency situation.

## Key Programs

Our school community is dedicated to fostering a learning environment that encourages academic excellence and personal growth. We promote the idea that we are a "Community of Learners" and that we participate in an atmosphere of concern and mutual respect. A committed staff provides encouragement, guidance and positive reinforcement for all students. Teachers use a rich range of activities to build strong communities in their classrooms. In addition, we have an active Student Success Team to help monitor and guide student learning.

## Focus for Improvement

Language development has been a chief focus including the adoption of an English Lang. Dev. (ELD) program to improve English achievement and a Step-Up to Writing program.

## Opportunities for Parent Involvement

**Contact Person-Name:** Mark Alvarado, Principal  
Judy Diaz, Secretary  
**Phone:** 695-5875

Parents volunteer regularly in the classrooms to enhance grade level programs. Parents are involved on all ends of the School Site Coalition making decisions affecting the school plan and program funding. The Latino Parents Group provides additional support to our school community. All parents are an integral component to the success of our program and are highly valued resources.

## School Description

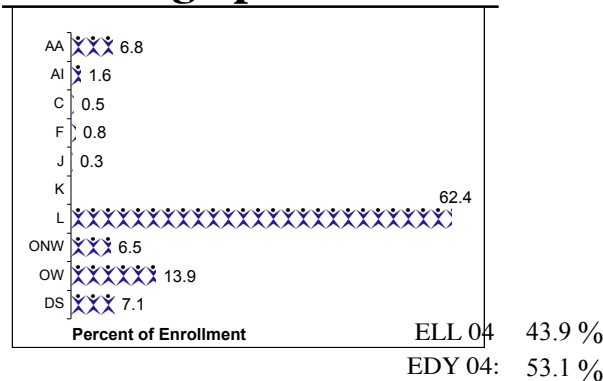
Buena Vista Alternative School's Spanish Two-Way Immersion Program offers the native English speaker and the native Spanish speaker an opportunity to become bilingual and biliterate while developing an appreciation for cultural diversity by:

- developing communicative fluency and literacy in an internationally significant language;
- developing and enriching English language skills;
- promoting academic achievement commensurate with the child's ability and grade level; and,
- encouraging understanding and appreciation for another linguistic and cultural identification.

## School Vision

Provide an opportunity to become bilingual and biliterate while developing an appreciation for cultural diversity. We meet these challenges through innovative and consistent strategies that engage all students in learning, self esteem, and creativity.

## Student Demographics (Fall 2004)



*\*These are selected highlights of the SARC. The complete SARC required by the California Department of Education can be seen at [www.sfusd.edu](http://www.sfusd.edu) under "school information."*

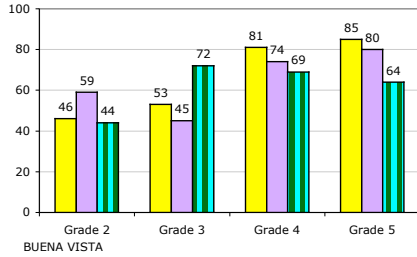
# Buena Vista ES STUDENT ACHIEVEMENT

## State Assessments

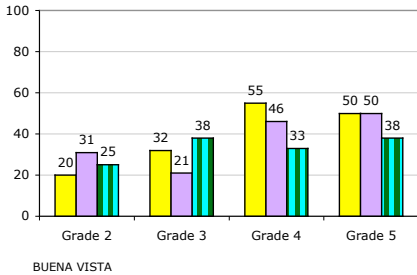
### CST English/Language Arts Grade Level Trends

2002 2003 2004

#### % Students at Basic & Above



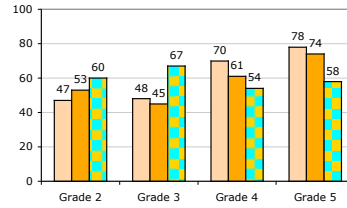
#### % Students at Proficient and Above



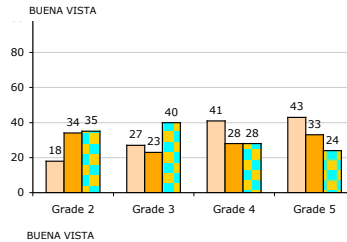
### CST Math Grade Level Trends

2002 2003 2004

#### % Students at Basic and Above



#### % Students at Proficient and Above



### Spanish Assessment of Basic Education

Reference percentile	Grade 2		Grade 3		Grade 4		Grade 5	
	2003	04	03	04	03	04	03	04
Reading	75	81	67	82	67	**	68	**
Math	69	87	60	91	60	**	70	**
Language	85	83	75	89	68	**	65	**
Spelling	77	81	62	83	58	**	58	**

\*10 or fewer students

Testing is done in the spring of the year.

### API Data

	2000-2001	2001-2002	2002-2003	2003-2004
Base API Score	682	651	682	681
Statewide Rank	6	4	5	4
Similar Schools Rank	2	1	2	1
Growth Target	6	7	6	6
Percent Tested in Spring	96 %	100 %	99 %	98 %
Actual Growth	-44	33	3	-4
<b>Growth API Score</b>	<b>638</b>	<b>684</b>	<b>685</b>	<b>677</b>

(Note: A indicates that no growth target was assigned in that year.)

School met all 2004 Adequate Yearly Progress (AYP) for Phase 1? No

3 year trend data on performance assessments

Writing California Writing Standards (Grade 4)		
2002	2003	2004
83.0%	69.6%	61.2%

Percent of students at a performance level of 4 or higher

CAT6 - 2 year trend			
Reading NPR		Math NPR	
2003	2004	2003	2004
45	39	41	43

### Comparisons Comparison of school to District and State for each grade level

#### 2004 CST/ELA

% students achieving at proficient or advanced level

#### 2004 CST/Math

% students achieving at proficient or advanced level

#### 2004 CAT6 Reading

% tested students scoring at or above 50th percentile (nat'l average)

#### 2004 CAT6 Math

% tested students scoring at or above 50th percentile (nat'l average)

Gr	2004 CST/ELA			2004 CST/Math			2004 CAT6 Reading			2004 CAT6 Math		
	School	District	State	School	District	State	School	District	State	School	District	State
2	25%	38%	36%	35%	55%	51%	33%	47%	47%	52%	63%	59%
3	38%	33%	30%	40%	52%	48%	41%	33%	35%	41%	56%	54%
4	33%	43%	40%	28%	49%	45%	28%	37%	36%	33%	54%	49%
5	38%	46%	40%	24%	40%	38%	42%	42%	41%	31%	55%	50%