

Dr. Charles R. Drew College Preparatory Academy

Mrs. Louise Jones, Principal

50 Pomona Street, San Francisco, CA 94124
415-330-1526



Principal's Introduction

Dr. Charles R. Drew College Preparatory Academy, is one of the DREAM Schools from PreK to 3rd grade. Being a Dream School we give the students the opportunities they deserve to thrive and succeed by providing education of the highest quality with extracurricular opportunities and college preparation. Our primary goal is for all students to participate in activities that enhance their academic achievement and socio-emotional growth. Our staff fosters this joy by providing developmentally appropriate activities with an interdisciplinary focus and opportunities for active learning and exploration.

Last Year's Best Achievements

Last year saw an increase in API scores for African American students, improvements in writing, and an overall improvement in math testing.

School Snapshot

| | |
|---------------------------------------|--|
| 2004/2005 Student Enrollment: 303 | Grade span: PreK |
| 03/04 Average Daily Attendance: 90.1% | Accountability Act and Improvement Programs: |
| Title I/State Pre-K Program: No | CSR |
| Children's Center/Childcare: Yes | |
| Student Uniforms: Yes | |
| Building (square feet): 54,100 | |
| Year of Construction: 1974 | |

Key Elements of School Safety Plan

- a) Tobacco, drug, and violence prevention programs are implemented to provide students with positive choices that add up to a healthy self-concept. Staff will receive training to assist them in implementing these programs.
- b) Staff members contribute to a plan which increases the traffic safety of the bus zone before school and at dismissal time.

Key Programs

- a) Tobacco, drug, and violence prevention programs provide students with positive choices that add to a healthy self-concept.
- b) Staff members contribute to a plan which increases the traffic safety of the bus zone before school and at dismissal time.
- c) Monthly Assemblies/Programs are held to enhance and integrate Language Arts skills with music.

Focus for Improvement

There is a focused effort toward improving literacy, math instruction, technology skills, and parent involvement.

Opportunities for Parent Involvement

Contact Person-Name: Louise Jones (Principal)

Phone: (415) 330 - 1526

- a) Weekly communication goes home through the Parent Newsletter, highlighting school activities and encouraging parent participation.
- b) Literacy and math workshops are presented by staff members, school-sponsored cultural events, and parent/teacher conferences.
- c) Opportunities are provided for decision-making involvement through participation in site councils, committees, and community meetings.

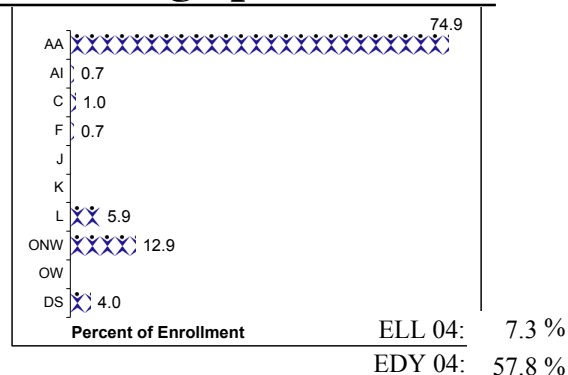
School Description

Dr. Charles R. Drew College Preparatory Academy offers a challenging and exciting learning environment from PreK thru 3rd grade. The academic program emphasizes the use of the Blackboard Configuration, which is a visual illustration of the teachers' commitment to instruction. The BBC allows students to know what they will learn in each class. The teaching staff collaborate on an academically challenging curriculum. The Houghton Mifflin program provides basic elements for our literacy program including a writing component. Experiments in science, math instruction, interdisciplinary projects and field trips complete the academic program. Computer instruction begins from PreK-3rd grade, which focuses and enhances computer literacy and integrates technology into the curriculum. Other special offerings include music, visual and performing arts, and P.E.

School Vision

The vision of Dr. Charles R. Drew College Preparatory Academy is to ensure that all of our students achieve to their maximum potential in all areas of the curriculum, sending them to fourth grade with high self-esteem, solid academic skills, and multi-ethnic friendships. We want them ready to perform to the highest and best of their ability in the next Dream school.

Student Demographics (Fall 2004)



**These are selected highlights of the SARC. The complete SARC required by the California Department of Education can be seen at www.sfusd.edu under "school information."*

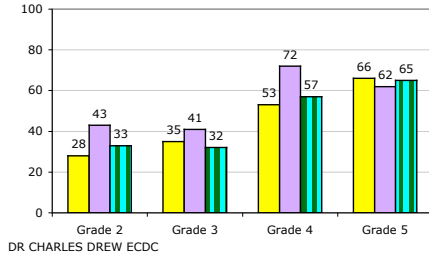
Drew ES STUDENT ACHIEVEMENT

State Assessments

CST English/Language Arts Grade Level Trends

2002 2003 2004

% Students at Basic & Above

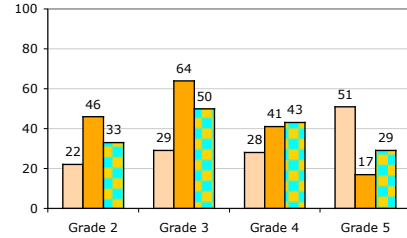


DR CHARLES DREW ECDC

CST Math Grade Level Trends

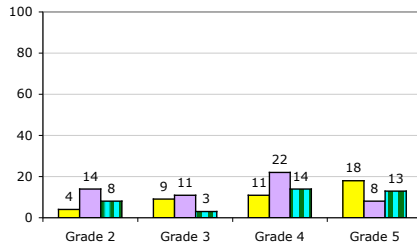
2002 2003 2004

% Students at Basic and Above



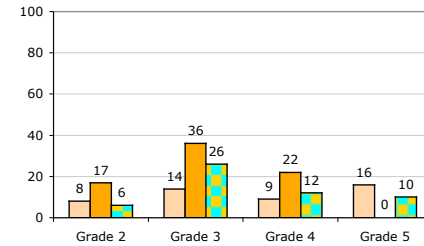
DR CHARLES DREW ECDC

% Students at Proficient and Above



DR CHARLES DREW ECDC

% Students at Proficient and Above



DR CHARLES DREW ECDC

Testing is done in the spring of the year.

API Data

| | 2000-2001 | 2001-2002 | 2002-2003 | 2003-2004 |
|--------------------------|-----------|-----------|-----------|-----------|
| Base API Score | 655 | 532 | 535 | 593 |
| Statewide Rank | 5 | 2 | 1 | 1 |
| Similar Schools Rank | 8 | 1 | 1 | 1 |
| Growth Target | 7 | 13 | 13 | 10 |
| Percent Tested in Spring | 99 % | 97 % | 99 % | 100 % |
| Actual Growth | -136 | -3 | 61 | -16 |
| Growth API Score | 519 | 529 | 596 | 577 |

(Note: # indicates that no growth target was assigned in that year.)

School met all 2004 Adequate Yearly Progress (AYP) for Phase 1? No

Percent of students at a performance level of 4 or higher

| Writing California Writing Standards (Grade 4) | | |
|--|-------|-------|
| 2002 | 2003 | 2004 |
| 48.8% | 84.4% | 40.0% |

CAT6 - 2 year trend

| Reading NPR | | Math NPR | |
|-------------|------|----------|------|
| 2003 | 2004 | 2003 | 2004 |
| 22 | 18 | 32 | 27 |

3 year trend data on performance assessments

Comparisons Comparison of school to District and State for each grade level

2004 CST/ELA

% students achieving at proficient or advanced level

2004 CST/Math

% students achieving at proficient or advanced level

2004 CAT6 Reading

% tested students scoring at or above 50th percentile (nat'l average)

2004 CAT6 Math

% tested students scoring at or above 50th percentile (nat'l average)

| Gr | School | District | State | School | District | State | School | District | State | School | District | State |
|----|--------|----------|-------|--------|----------|-------|--------|----------|-------|--------|----------|-------|
| 2 | 8.0% | 38% | 36% | 6.0% | 55% | 51% | 14.0% | 47% | 47% | 22.0% | 63% | 59% |
| 3 | 3.0% | 33% | 30% | 26.0% | 52% | 48% | 12.0% | 33% | 35% | 26.0% | 56% | 54% |