

El Dorado Elementary School

HIGHLIGHTS

Dr. Maria Manuel, Principal

70 Delta Street, San Francisco, CA 94134
415-330-1537

Principal's Introduction

Every person at El Dorado is an important unique being. Students will have access to a balanced program in the area of language.

Last Year's Best Achievements

Ranked among the top ten schools to make the most significant gains on the CAT6 test.

School Snapshot

2004/2005 Student Enrollment: 325
03/04 Average Daily Attendance: 92.6%
Title I/State Pre-K Program: No
Children's Center/Childcare: No
Student Uniforms: Yes
Building (square feet): 30,300
Year of Construction: 1953

Grade span: K-5
Accountability Act and Improvement Programs: II/USP Program Improvement

Key Elements of School Safety Plan

All members of the El Dorado community strive to maintain an orderly and safe learning environment. Parents and staff work to improve emergency preparedness. A Student Advisor supervises the school safety patrol. A Police Department community outreach officer visits the school to promote and support student safety and appropriate conduct.

Key Programs

Student Council Elections and Events; El Dorado Kickball League; After School Extended Learning Programs: Student Conflict managers; Student work is regularly and profusely displayed throughout the building; Literacy and Math peer coaches to support teaching staff; Student Advisor provides support for schoolwide behavior program; schoolwide positive behavior program; Teachers utilize a variety of teaching methods and strategies in order to meet the needs of all learners; SDC students are mainstreamed in regular education; Reading buddies provide cross grade level experiences for students. Fifth grade students experience a program that will transition them into middle school.

Focus for Improvement

A schoolwide articulated and consistent base reading program will provide both teachers and students a clear path to literacy.

Opportunities for Parent Involvement

Contact Person-Name: Dr. Maria Manuel

Phone: 415-330-1537

Parents are encouraged to participate in the PTA, the School Site Council or as school volunteers and invited to attend special events such as the International Potluck, Family Literacy Night, and Family Math Night. Parents interested in school programs can call the school office. Spanish and Chinese translations are available for all meetings and events.

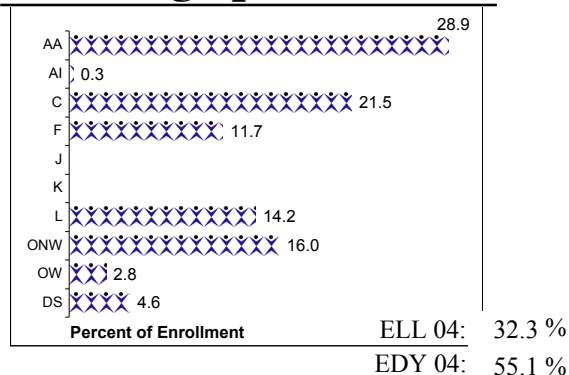
School Description

El Dorado Elementary School serves an ethnically diverse student population. The school is located in Visitation Valley. Each member of the El Dorado staff shares in the belief that all children can learn. Members of the school community work together to create an environment that is focused on the success of each student, both academically and socially. The School Site Council, consisting of community members, parents, teachers, paraprofessionals, and school administration, assists with curriculum and program development. El Dorado is an excellent learning environment that provides students with an academic background that will serve them well throughout their lives.

School Vision

All stakeholders of El Dorado School are dedicated to providing a respectful environment in which students explore and develop the knowledge and skills needed to function as responsible citizens in our society.

Student Demographics (Fall 2004)



**These are selected highlights of the SARC. The complete SARC required by the California Department of Education can be seen at www.sfusd.edu under "school information."*

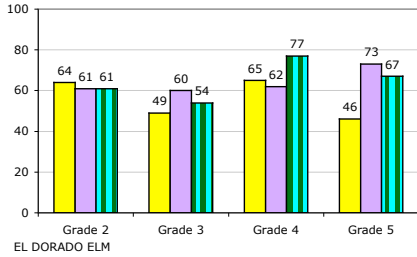
El Dorado ES STUDENT ACHIEVEMENT

State Assessments

CST English/Language Arts Grade Level Trends

2002 2003 2004

% Students at Basic & Above

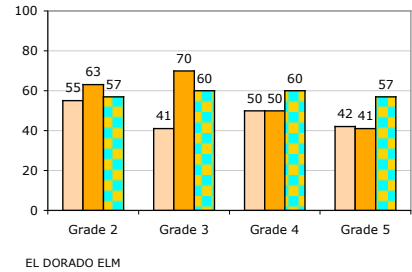


CST Math

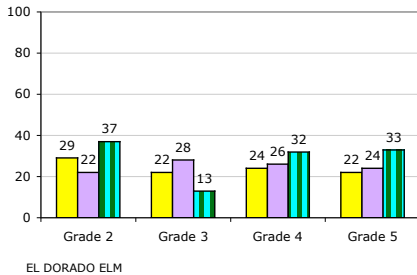
Grade Level Trends

2002 2003 2004

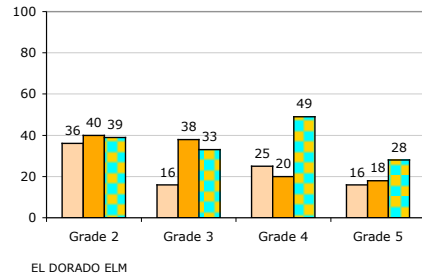
% Students at Basic and Above



% Students at Proficient and Above



% Students at Proficient and Above



Testing is done in the spring of the year.

API Data

	2000-2001	2001-2002	2002-2003	2003-2004
Base API Score	506	593	621	662
Statewide Rank	2	3	3	3
Similar Schools Rank	1	2	1	1
Growth Target	15	10	9	7
Percent Tested in Spring	94 %	92 %	99 %	100 %
Actual Growth	90	16	51	27
Growth API Score	596	609	672	689

(Note: A indicates that no growth target was assigned in that year.)

Percent of students at a performance level of 4 or higher

Writing California Writing Standards (Grade 4)		
2002	2003	2004
71.2%	69.8%	64.3%

CAT6 - 2 year trend

Reading NPR		Math NPR	
2003	2004	2003	2004
30	32	40	47

3 year trend data on performance assessments

School met all 2004 Adequate Yearly Progress (AYP) for Phase 1? Yes

Comparisons Comparison of school to District and State for each grade level

2004 CST/ELA

% students achieving at proficient or advanced level

Gr	School	District	State
2	37%	38%	36%
3	13%	33%	30%
4	32%	43%	40%
5	33%	46%	40%

2004 CST/Math

% students achieving at proficient or advanced level

School	District	State
39%	55%	51%
33%	52%	48%
49%	49%	45%
28%	40%	38%

2004 CAT6 Reading

% tested students scoring at or above 50th percentile (nat'l average)

School	District	State
45%	47%	47%
21%	33%	35%
21%	37%	36%
35%	42%	41%

2004 CAT6 Math

% tested students scoring at or above 50th percentile (nat'l average)

School	District	State
59%	63%	59%
44%	56%	54%
44%	54%	49%
33%	55%	50%