

San Francisco Unified School District
School Accountability Report Card Highlights 2006/2007

Bryant Elementary School

1050 York Street, San Francisco, CA 94110 • 415-695-5780 • Ms. Nancy Sarraga, Principal

School Description and Mission Statement

Bryant Elementary School is directly in the heart of the Mission District. It is a small school dedicated to student excellence. Raising student achievement is our primary goal. Our nurturing environment and standards based instruction support the development and language needs of all children. Because of its small size, the staff, parents, neighbors, community helpers and children know each other well. We plan and attend many events together! The staff is committed to developing every students' academic, humanistic and creative potential. Producing the next generation of smart, creative, kind and caring adults. With high expectations and consistent parent support all students at Bryant will thrive and succeed.

School Instruction and Leadership

Bryant Elementary school has a very rigorous language arts program in both Spanish and English. English Language Development(ELD)is taught daily. We provide an active learning environment for students, parents and teachers. We have many services on site that support student's needs. We have a community outreach worker, a parent liaison, student advisor, and on-site counseling as needed by Instituto Familiar. Our Leadership team meets every other week and is represented by a teacher in each grade level. The Leadership team makes recommendations to the staff and parents. We are also a Reading First school with emphasis and focus on reading and writing. All of the teachers are highly prepared, fully credentialed, and deeply dedicated to the achievement of each student.

Opportunities for Parental Involvement

Our parent liaison and Outreach Consultant work with parents and community members to volunteer in the school and in classrooms. The Parent Teacher Association sponsors fundraisers and parent community meetings. The SSC/ELAC meetings are scheduled monthly. Bi-Weekly parent newsletters are sent home in English and Spanish. We sponsor Tiempo Familiar, a monthly parent workshop designed to strengthen the home-school connection and assist parents in developing their skills to better help their children at home. Parents are considered our partners in the education of all the students.

School Facility Conditions & Improvements

Recently Bryant School was updated for ADA. Bryant is a two story building with beautifully restored restrooms on both floors. Not only are there public restrooms with two stalls, there are also private wheelchair accessible restrooms. There is an elevator, a wheelchair lift to the stage and all the doors have been changed to accommodate wheel chairs. Bryant is a recipient of a greening grant. Some of the cement in the yard was torn up and replaced with bark chips, trees and large sitting rocks. This plan is yet to be finished. Parents have agreed to put up trellis, plant flowers, and make a beautiful green outdoor space for children to enjoy. The school has two part time custodians and one fulltime. The building is maintained in good condition.

School Safety Plan

To help our students maintain a healthy lifestyle our curriculum includes lessons in tobacco, drugs, alcohol and violence prevention. The connection between the school and the student's homes is strengthened through monthly parent workshops that support student achievement and well being. There are earthquake and fire drills regularly. A Crisis Response Team is in place in case of a disaster. Each child has an earthquake bag made up of water, granola bar, and a blanket. The Principal and the PTA are working with a neighborhood organization to help maintain a safe campus and neighborhood. Graffiti is eliminated as soon as it is spotted to maintain our beautiful and colorful school grounds.

Types of Services Funded

Bryant has a multitude of services to support our students and families. All of the programs help children to enhance self-confidence and experience the joy of success. Programs that are available after school are Boys and Girls Club, Tutoring for underperforming students, year round CDC daycare for K-5th graders and EXCEL After School Program, Beginning Teacher Support and Assessment(BTSA)supports new teachers, a Literacy Specialist, an Instructional Reform Facilitator, Parent Liaison, Outreach Consultant, on site therapy, a Student Advisor, Conflict Resolution Program, a paraprofessional for Kindergarten classes, a Site Support Substitute, a part time Librarian, an English Language Development Coach, The Jewish Coalition for Literacy, Student Teachers and San Francisco Arts Foundation.

** These are selected highlights of the SARC. The complete SARC required by the California Department of Education can be seen at www.sfusd.edu under "school information."*



San Francisco Unified School District
School Accountability Report Card Highlights 2006/2007

Bryant Elementary School

1050 York Street, San Francisco, CA 94110 • 415-695-5780 • Ms. Nancy Sarraga, Principal

Academic Performance Index (API)

API Data	02-03	03-04	04-05	05-06
API Base Score	573	623	627	671
Statewide Rank *	2	2	2	2
Similar Schools Rank *	3	4	3	3
Growth Target **	11	9	9	6
Percent Tested	100	100	99	100
Actual Growth	66	2	44	-2
API Growth Score	639	625	671	669

* These rankings are based on previous year's data.
 ** "A" means the school scored at or above the statewide performance target of 800 in 2005.
 "B" means the school did not have a valid 2005 API base and will not have any growth or target information.

**Federal Accountability:
 Adequate Yearly Progress (AYP)**

	2004	2005	2006
Met All AYP Criteria?	No	Yes	No

California Writing Standards

Percent of students at a performance level of 4 or higher

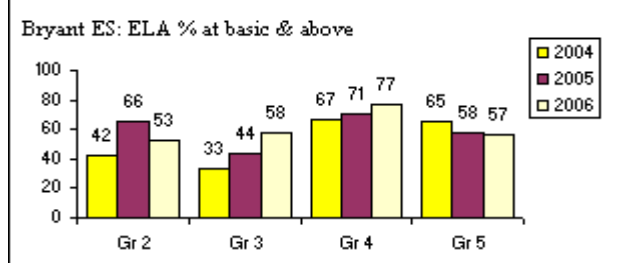
Grade	2004	2005	2006
04	57.6%	79.4%	90.3%

CAT6 - 3 Year Trend

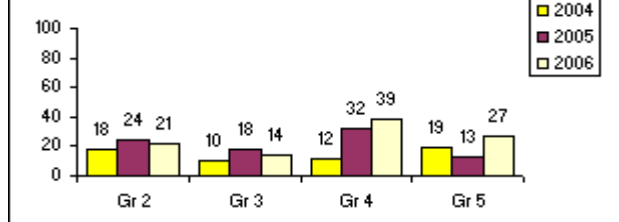
Grade	Reading NPR			Math NPR		
	2004	2005	2006	2004	2005	2006
03	23	24	23	45	51	47

State Assessments

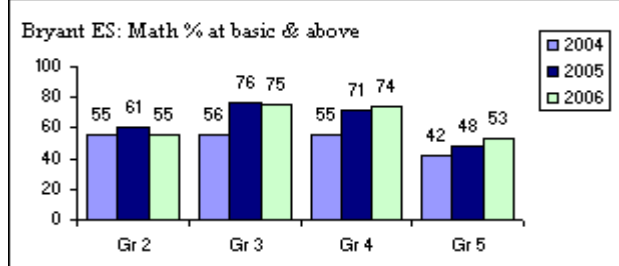
CST English/Language Arts



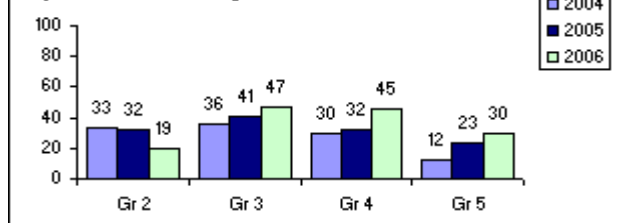
Bryant ES: ELA % at proficient & above



CST Mathematics



Bryant ES: Math % at proficient & above



California Standard Tests (CST) Comparisons

Comparison of school to District and State for each grade level at percent students achieving at proficient or advanced level

Grade	2006 ELA			2006 Mathematics			2006 History			2006 Science			2006 Life Science		
	School	District	State	School	District	State	School	District	State	School	District	State	School	District	State
02	21%	49%	47%	19%	63%	59%									
03	14%	42%	37%	47%	65%	58%									
04	39%	55%	49%	45%	60%	54%									
05	27%	45%	43%	30%	51%	48%				13%	33%	32%			

* These are selected highlights of the SARC. The complete SARC required by the California Department of Education can be seen at www.sfusd.edu under "school information."