

San Francisco Unified School District
School Accountability Report Card Highlights 2006/2007

El Dorado Elementary School

70 Delta Street, San Francisco, CA 94134 • 415-330-1537 • Mr. Tai Schoeman, Principal

School Description and Mission Statement

El Dorado is an extremely diverse school where teachers, staff and parents come together to ensure the achievement of all students. El Dorado's focus is the creation of an environment that promotes teaching the whole child. With this goal in mind the school invests its energies in programs that meet the academic and social needs of all students and include utilizing standards based curricula and a variety of teaching methods and strategies. We offer students extended learning opportunities that allow them to explore areas of learning beyond traditional academics and include expanded visual and performing arts experiences with professional artists and musicians, after school tutorials in reading and math, as well as science partnerships with UCSF and Conservation Connection.

School Instruction and Leadership

Teachers meet regularly with the principal, IRF and H.M. reading coaches in order to plan and implement programs and practices that support student achievement based on Best Practices and State Standards. Grade level planning occurs three times a month in order to implement a standards based program of instruction. All teachers work collaboratively to evaluate assessment data through a Results Oriented Cycle of Inquiry. They use data to drive instruction and create strategies for implementing an effective academic program. The leadership team meets twice a month. The teacher leaders plan, create and facilitate the implementation of school-wide instructional goals as well as monitoring programs. Professional development is provided to staff and geared to link to student academic needs.

Opportunities for Parental Involvement

Parents are welcome to visit the school and are encouraged to participate in the PTA, the School Site Council, or as school volunteers. Parents can volunteer in the classrooms, assist on field trips, provide library support, help to beautify the school, plan enrichment activities and supervise playground activities. Parents are invited to attend special events such as Read Across America Day, Family Literacy Night, Science Night and Family Math Night. A home-school communication newsletter is coordinated by the Parent Liaison and provides current news and information. Parents interested in any of the school programs are urged to contact the Parent Liaison by calling the school office. Spanish and Chinese translation is available for all meetings and events.

School Facility Conditions & Improvements

The school was constructed in 1953 and has 30,300 square feet. It is safe clean and functional. Half the physical plant was painted interior and exterior in 2005-2006 school year. The playgrounds were resurfaced and a new play structure was added to the Kindergarten yard. The district has ensured that this school has facilities that are safe clean and adequate, and that any needed maintenance to ensure good repair has been or will soon be completed. We have adequate structures and staff in place to ensure all students are safe on school grounds before, during and after school.

School Safety Plan

All members of the El Dorado community strive to maintain an orderly and safe learning environment. Students and teachers regularly practice fire and earthquake drills. The students are taught how to avoid dangerous situations. The Crisis Response Team and the Coordinated Services Team oversee the written safety plan ensuring that students and staff respond safely and effectively should an emergency take place. Members of the Police and Fire Department visit the school yearly to promote and support student safety and appropriate conduct. The nurse and Learning Support Consultant work with students and staff to address emotional effects resulting from a crisis. Priority is always placed on how to keep the students safe.

Types of Services Funded

Our interdisciplinary instructional approach focuses on meeting the needs of our diverse student population, while promoting cross-cultural tolerance. El Dorado boasts several piloted programs that connect social-emotional wellbeing and academic rigor. One of these programs includes a partnership with San Francisco State Universities Kinesiology Department. Visual and Performing arts is a major focus of the school. Students receive instruction in music weekly and the after school program boasts several music programs including music therapy and opera story creation. Our location on the eastern slope of John McLaren Park provides walking access to the watershed, where students carry out hands on environmental science experiments with the help of the Conservation Connection and Wise.

** These are selected highlights of the SARC. The complete SARC required by the California Department of Education can be seen at www.sfusd.edu under "school information."*



San Francisco Unified School District
School Accountability Report Card Highlights 2006/2007

El Dorado Elementary School

70 Delta Street, San Francisco, CA 94134 • 415-330-1537 • Mr. Tai Schoeman, Principal

Academic Performance Index (API)

API Data	02-03	03-04	04-05	05-06
API Base Score	621	662	699	694
Statewide Rank *	3	3	4	3
Similar Schools Rank *	1	1	4	1
Growth Target **	9	7	5	5
Percent Tested	99	100	100	100
Actual Growth	51	27	-5	23
API Growth Score	672	689	694	717

* These rankings are based on previous year's data.
 ** "A" means the school scored at or above the statewide performance target of 800 in 2005.
 "B" means the school did not have a valid 2005 API base and will not have any growth or target information.

**Federal Accountability:
 Adequate Yearly Progress (AYP)**

	2004	2005	2006
Met All AYP Criteria?	Yes	Yes	No

California Writing Standards

Percent of students at a performance level of 4 or higher

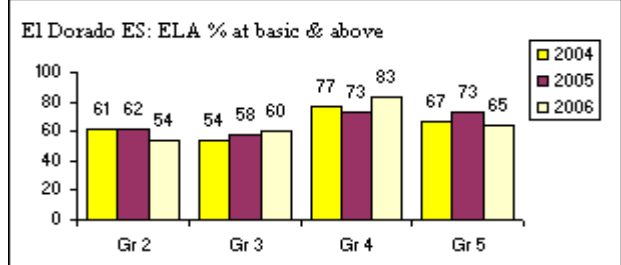
Grade	2004	2005	2006
04	64.3%	80.0%	82.1%

CAT6 - 3 Year Trend

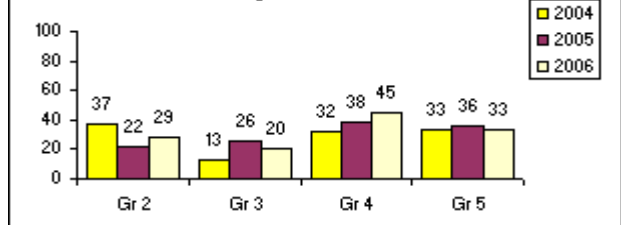
Grade	Reading NPR			Math NPR		
	2004	2005	2006	2004	2005	2006
03	27	34	24	45	57	46

State Assessments

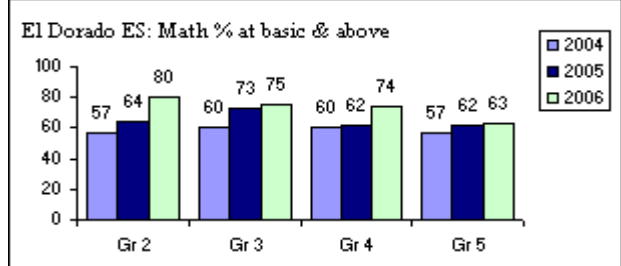
CST English/Language Arts



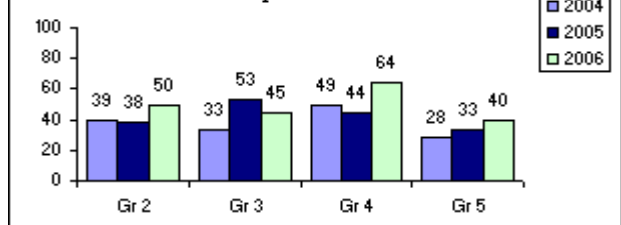
El Dorado ES: ELA % at proficient & above



CST Mathematics



El Dorado ES: Math % at proficient & above



California Standard Tests (CST) Comparisons

Comparison of school to District and State for each grade level at percent students achieving at proficient or advanced level

Grade	2006 ELA			2006 Mathematics			2006 History <small>Grades 8, 10, 11 were tested in 2006</small>			2006 Science <small>Grades 5, 8, 9, 10, 11 were tested in 2006</small>			2006 Life Science <small>Grade 10 was tested in 2006</small>		
	School	District	State	School	District	State	School	District	State	School	District	State	School	District	State
02	29%	49%	47%	50%	63%	59%									
03	20%	42%	37%	45%	65%	58%									
04	45%	55%	49%	64%	60%	54%									
05	33%	45%	43%	40%	51%	48%				19%	33%	32%			

* These are selected highlights of the SARC. The complete SARC required by the California Department of Education can be seen at www.sfusd.edu under "school information."