



**San Francisco Unified School District**  
**School Accountability Report Card Highlights 2006/2007**

**John Yehall Chin Elementary School**

350 Broadway, San Francisco, CA 94133 • 415-291-7946 • Mr. Allen Lee, Principal

### **School Description and Mission Statement**

"We like it here because this school is small and you know the names of all the students." "We like it here because the adults don't let politics get in the way of teaching and learning." These are just a few of the testimonials that our parents have told us about our school.

Being efficient and productive are the two characteristics that we treasure the most here. We fully realize and accept without angst the importance of state mandated assessments. Monthly programs such as the Washington Mutuals Savings Program, the School Spirits Store...weekly programs such as the School Pride Tickets, the Lily Cai Chinese Cultural Dance Program -- These are just some of the programs that our students and families treasure and love.

Intrigued? Come check out this best kept secret in town!

### **School Instruction and Leadership**

Because our school is small, we are able to give our students personalized instruction as much as logistically possible. Instruction, whether in small groups or whole-class, is always geared toward the students' unique needs. Our school encourages hands-on activities and the efficient use of manipulatives to foster deeper understanding.

We further encourage our students to appreciate all cultural heritages. Science, social studies, art, music, and health are all interwoven into our core multidisciplinary curriculum.

Our classroom and Computer Lab computers provide Internet access for research and communication purposes.

On top of mastering basic skills, we try our best to provide our students a plethora of opportunities to bolster higher level learning and critical thinking.

### **Opportunities for Parental Involvement**

We have an active and comprehensive parent involvement program. Moreover, parents can get involved in their own unique ways according to their work/life schedules. From volunteering in our classrooms and becoming Room Parents to volunteering from home, we appreciate parental involvement at all levels.

The Parents Teachers Club meets once a month along with our School Site Council and English Language Advisory Committee groups.

We communicate with our parents regularly through monthly School Newsletters, Classroom Newsletters every other week, Student Progress Updates every other week, Report Cards, home visits, in-person conferences, phone conferences, as well as during Parents Teachers Conferences during the Fall and Spring.

### **School Facility Conditions & Improvements**

During the last six school years, we have purchased over 40 brand new PC's and put together a new PC Computer Lab. JYC has also been awarded a grant for a playground structure, now in its third year of use.

Other than that, the condition of the school's grounds, building, and restrooms is solid.

### **School Safety Plan**

The key elements of our School Safety Plan help us promote positive behavior and high academic expectations for our students. Child abuse reporting and disaster/emergency procedures are posted and enforced. We want to ensure that our school is a safe and secure learning environment for our students.

We implement a Student of the Week program and a School Pride Ticket program to help us promote a positive learning environment. Our School Psychologist, Resource Specialist, Speech Technician, and Learning Support Consultant conduct ongoing Student Success Team meetings to discuss strategies and interventions for at-risk students. In the 4th and 5th Grades, we have put together a Multigraded Project Based Accelerated Learning Class to serve the needs of our GATE & high-potential students.

### **Types of Services Funded**

Small Group Tutoring Program -- volunteers  
Everybody Wins Lunch Time Reading Program -- volunteers  
ACE After-school Program & Lunch Bunch Program -- Chinatown Beacon Center  
Physical Education Program, After-school Homework Club, & Building Bridges Mentorship Program -- Chinatown YMCA  
Arts Education Collaborative -- Visual & Performing Arts Dept.  
Beginning Teacher Support & Assessment -- Teaching & Learning Dept.  
Science and Health Education Partnership -- UCSF  
Junior Achievement  
Center for Science Outreach -- UCSF  
Elementary Arts Program -- LEAP / Visual & Performing Arts Dept.  
Chinese Cultural Dance Program -- Lily Cai Dance Company  
Dance in School & Community -- SF Ballet  
Elementary Music Program -- Visual & Performing Arts Dept.  
KRE Program -- Kaplan  
Savings Day -- WAMU



**San Francisco Unified School District**  
**School Accountability Report Card Highlights 2006/2007**

**John Yehall Chin Elementary School**

350 Broadway, San Francisco, CA 94133 • 415-291-7946 • Mr. Allen Lee, Principal

**Academic Performance Index (API)**

API Data	02-03	03-04	04-05	05-06
API Base Score	763	832	853	863
Statewide Rank *	8	9	9	9
Similar Schools Rank *	10	10	10	9
Growth Target **	2	A	A	A
Percent Tested	100	100	100	100
Actual Growth	63	30	10	10
API Growth Score	826	862	863	873

\* These rankings are based on previous year's data.  
 \*\* "A" means the school scored at or above the statewide performance target of 800 in 2005.  
 "B" means the school did not have a valid 2005 API base and will not have any growth or target information.

**Federal Accountability:  
 Adequate Yearly Progress (AYP)**

	2004	2005	2006
Met All AYP Criteria?	Yes	Yes	Yes

**California Writing Standards**

Percent of students at a performance level of 4 or higher

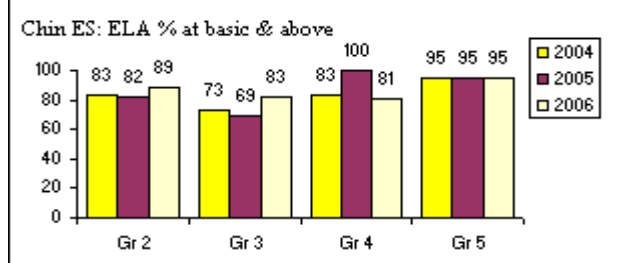
Grade	2004	2005	2006
04	82.5%	97.5%	97.6%

**CAT6 - 3 Year Trend**

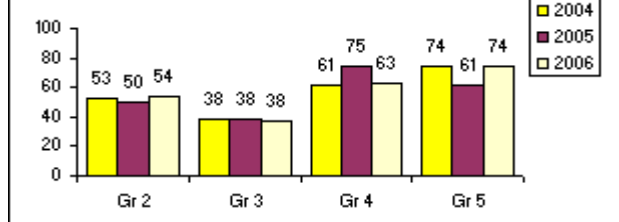
Grade	Reading NPR			Math NPR		
	2004	2005	2006	2004	2005	2006
03	38	36	42	78	80	81

**State Assessments**

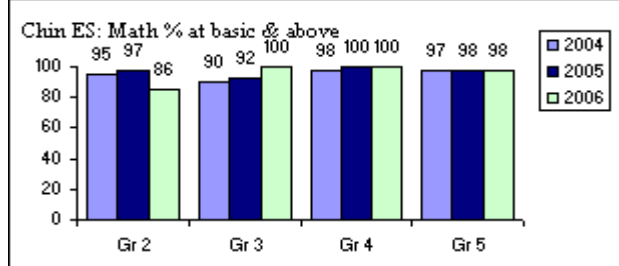
**CST English/Language Arts**



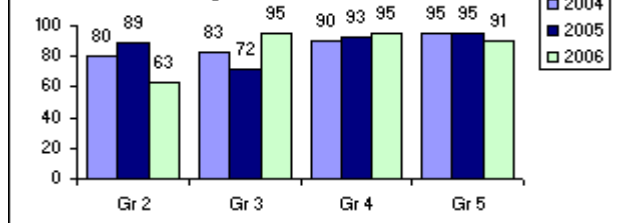
**Chin ES: ELA % at proficient & above**



**CST Mathematics**



**Chin ES: Math % at proficient & above**



**California Standard Tests (CST) Comparisons**

Comparison of school to District and State for each grade level at percent students achieving at proficient or advanced level

Grade	2006 ELA			2006 Mathematics			2006 History			2006 Science			2006 Life Science		
	School	District	State	School	District	State	School	District	State	School	District	State	School	District	State
02	54%	49%	47%	63%	63%	59%									
03	38%	42%	37%	95%	65%	58%									
04	63%	55%	49%	95%	60%	54%									
05	74%	45%	43%	91%	51%	48%				56%	33%	32%			

\* These are selected highlights of the SARC. The complete SARC required by the California Department of Education can be seen at [www.sfusd.edu](http://www.sfusd.edu) under "school information."